

## SECTION 6

### EXPLODED VIEWS

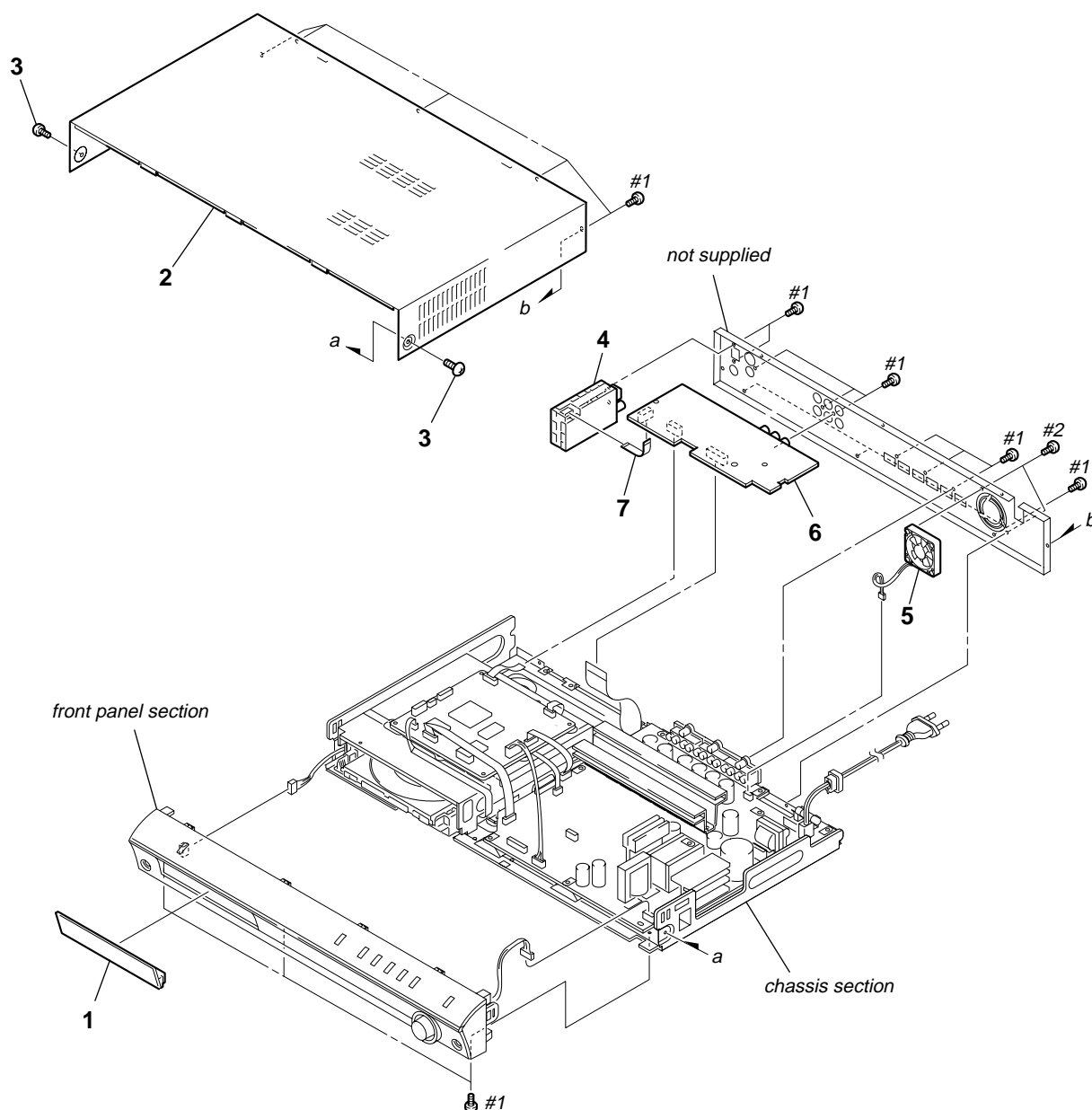
**NOTE:**

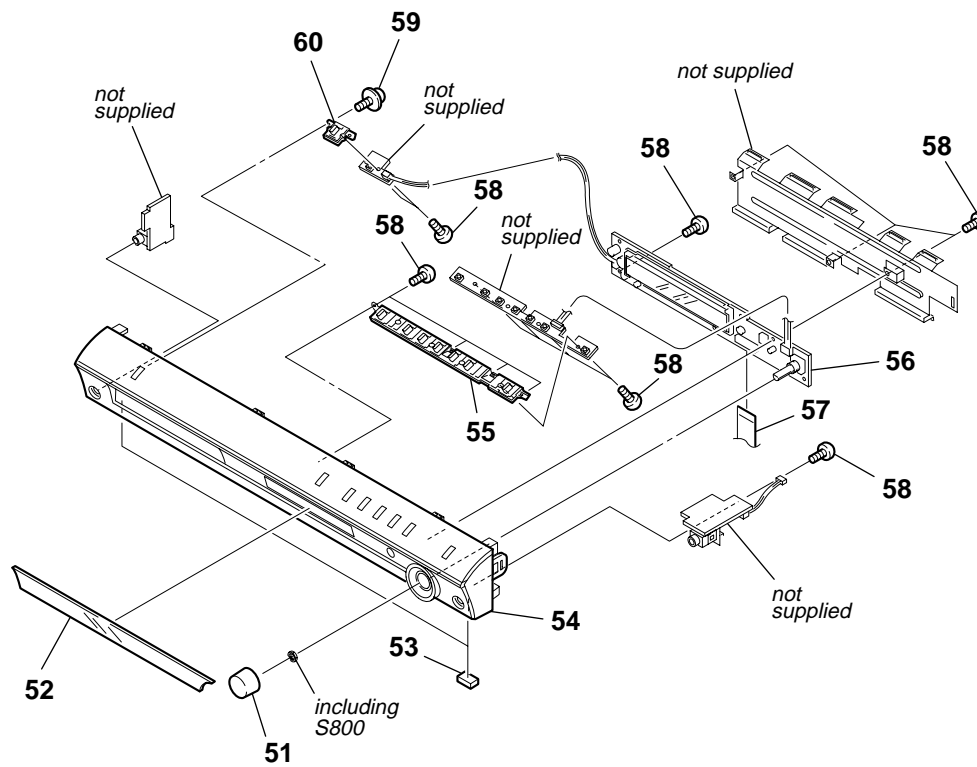
- -XX and -X mean standardized parts, so they may have some difference from the original one.
- Items marked “\*” are not stocked since they are seldom required for routine service. Some delay should be anticipated when ordering these items.

- The mechanical parts with no reference number in the exploded views are not supplied.
- Abbreviation  
AUS : Australian model  
E3 : 240V AC area in E model  
HK : Hong Kong model  
KR : Korean model  
SP : Singapore model

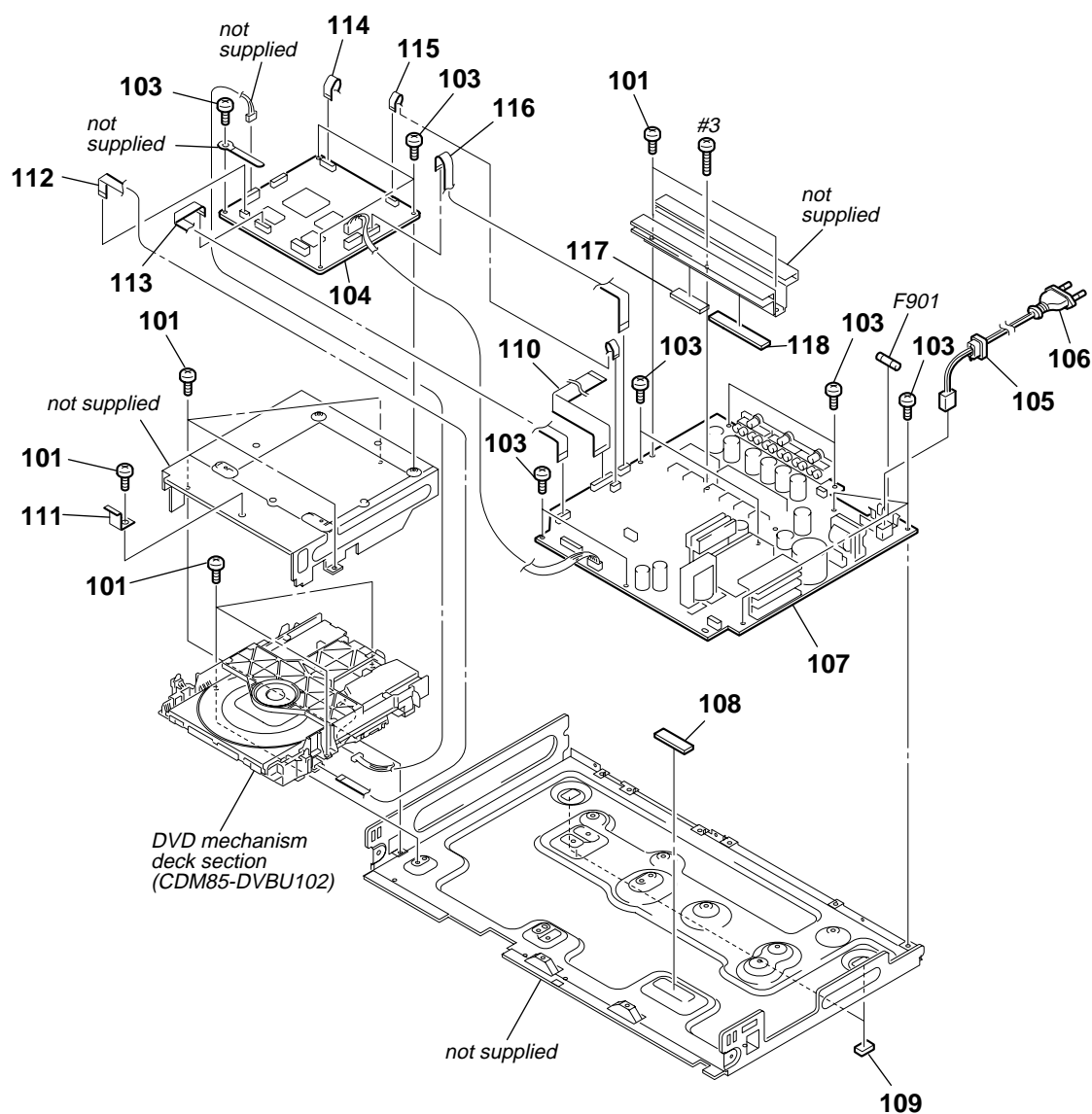
The components identified by mark  $\triangle$  or dotted line with mark  $\triangle$  are critical for safety. Replace only with part number specified.

## 6-1. OVERALL SECTION





## 6-3. CHASSIS SECTION



☆ New part of EEP ROM (IC103) on the DMB10 board cannot be used. Therefore, if the mounted DMB10 board (A-1116-354-A, etc.) is replaced, exchange new EEP ROM (IC103) with that used before the replacement.

# HCD-DZ550

## 6-4. DVD MECHANISM DECK SECTION (CDM85-DVBU102)

