

SECTION 5 EXPLODED VIEWS

Note:

- -XX and -X mean standardized parts, so they may have some difference from the original one.

- Items marked "*" are not stocked since they are seldom required for routine service.

Some delay should be anticipated when ordering these items.

Abbreviation

AUS : Australian model

CND : Canadian model

ECE : Continental European,
East European and
Russian models

TW : Taiwan model

- The mechanical parts with no reference number in the exploded views are not supplied.

- Color Indication of Appearance Parts Example:

KNOB, BALANCE (WHITE) . . . (RED)

Parts Color Cabinet's Color

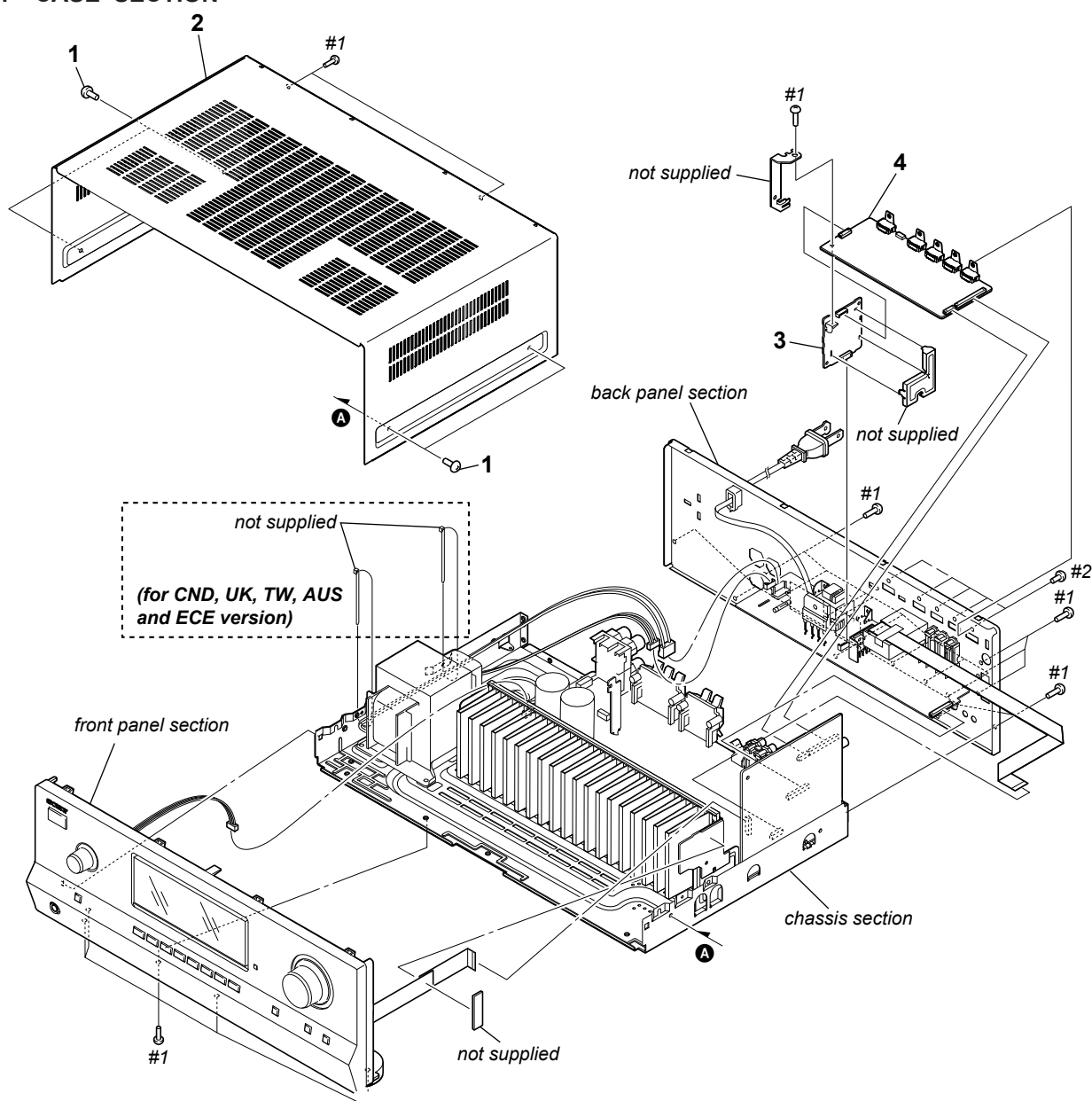
- Accessories are given in the last of the electrical parts list.

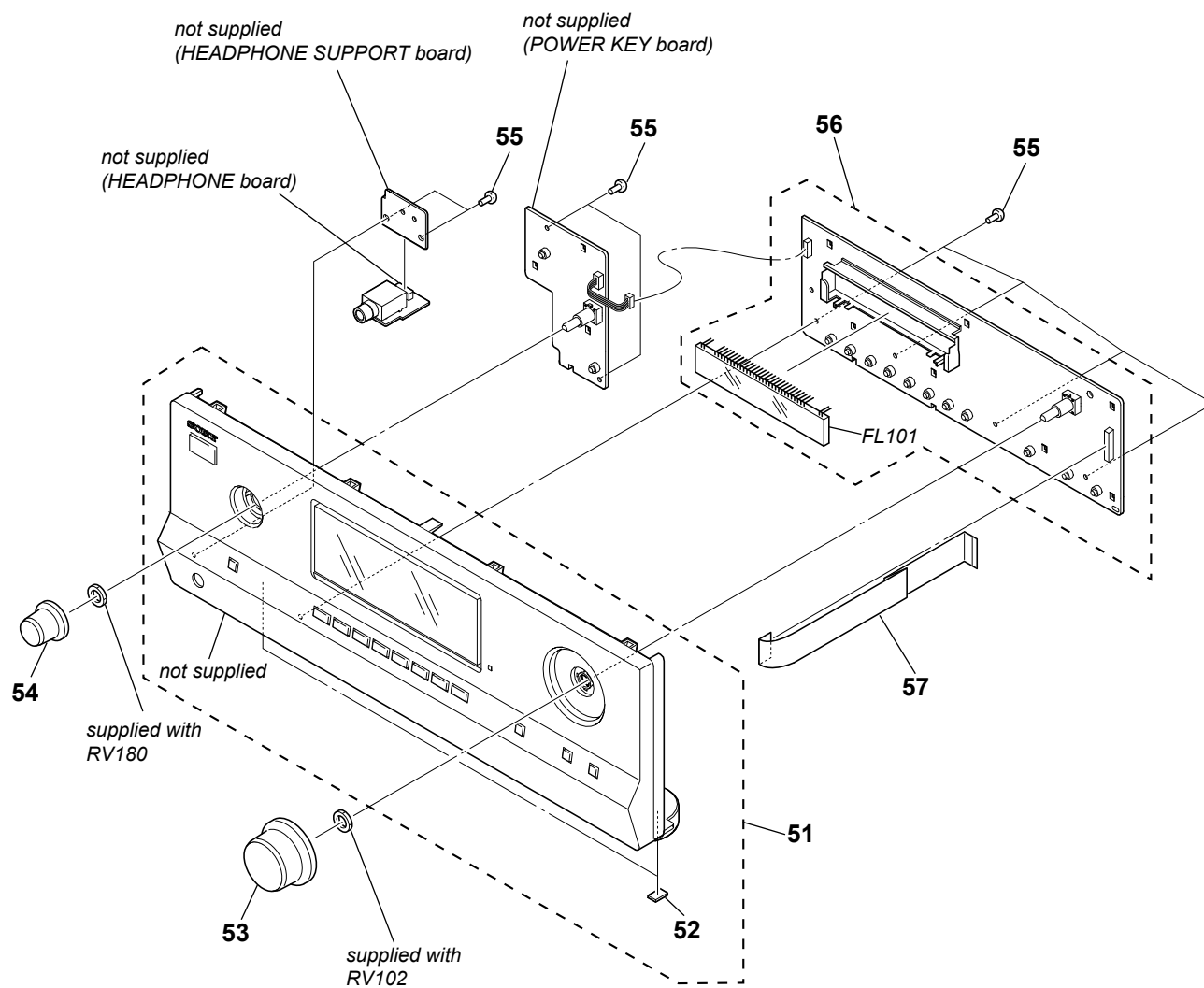
The components identified by mark \triangle or dotted line with mark \triangle are critical for safety.
Replace only with part number specified.

Les composants identifiés par une marque \triangle sont critiques pour la sécurité.

Ne les remplacer que par une pièce portant le numéro spécifié.

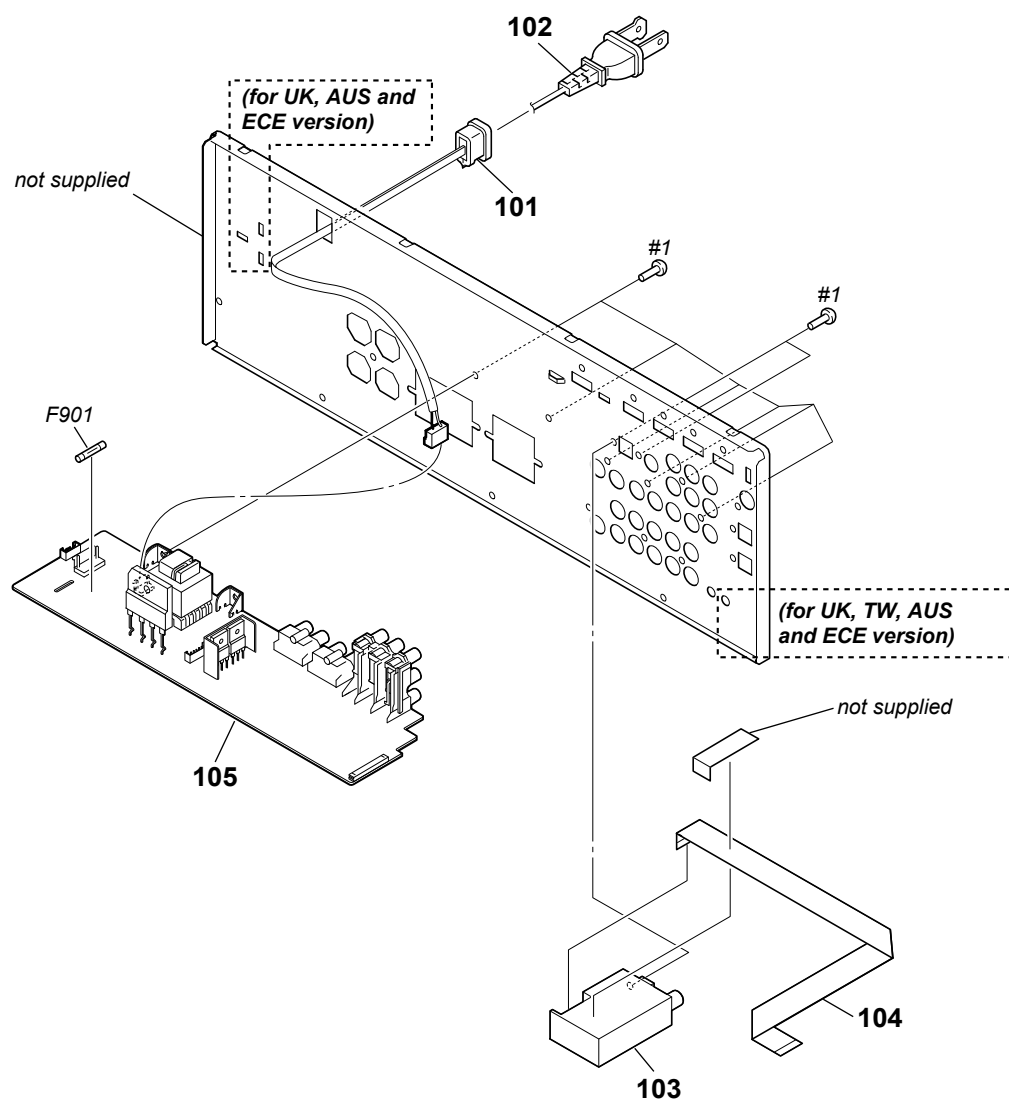
5-1. CASE SECTION



STR-DH520**5-2. FRONT PANEL SECTION**

Note: If wire (flat type) is replaced, install it after bending it in the same form as that before replacement.

5-3. BACK PANEL SECTION



Note: If wire (flat type) is replaced, install it after bending it in the same form as that before replacement.

STR-DH520

Ver. 1.3

5-4. CHASSIS SECTION