

SECTION 2 EXPLODED VIEWS

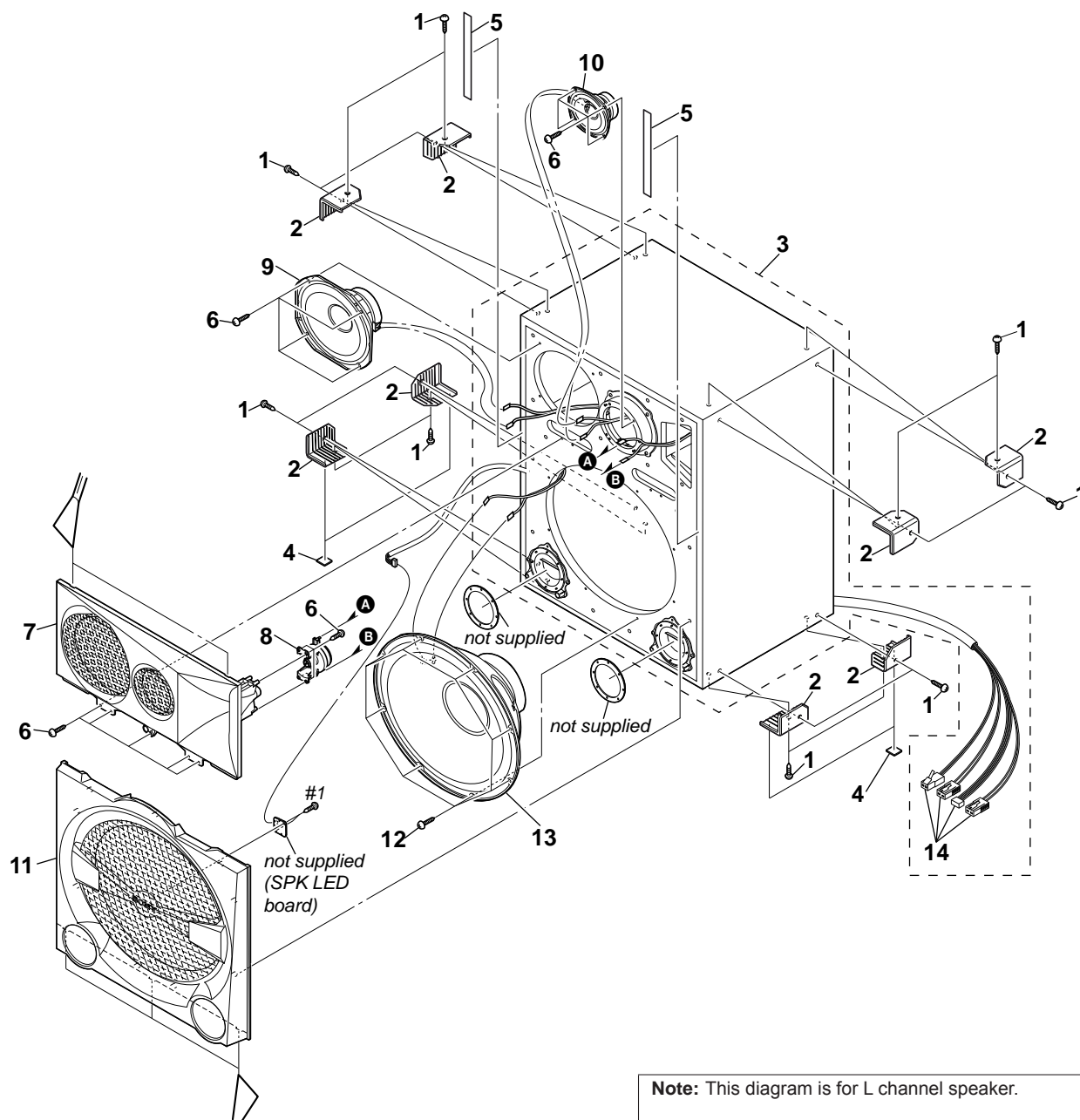
NOTE:

- -XX and -X mean standardized parts, so they may have some difference from the original one.
- Items marked "*" are not stocked since they are seldom required for routine service. Some delay should be anticipated when ordering these items.

• Abbreviation

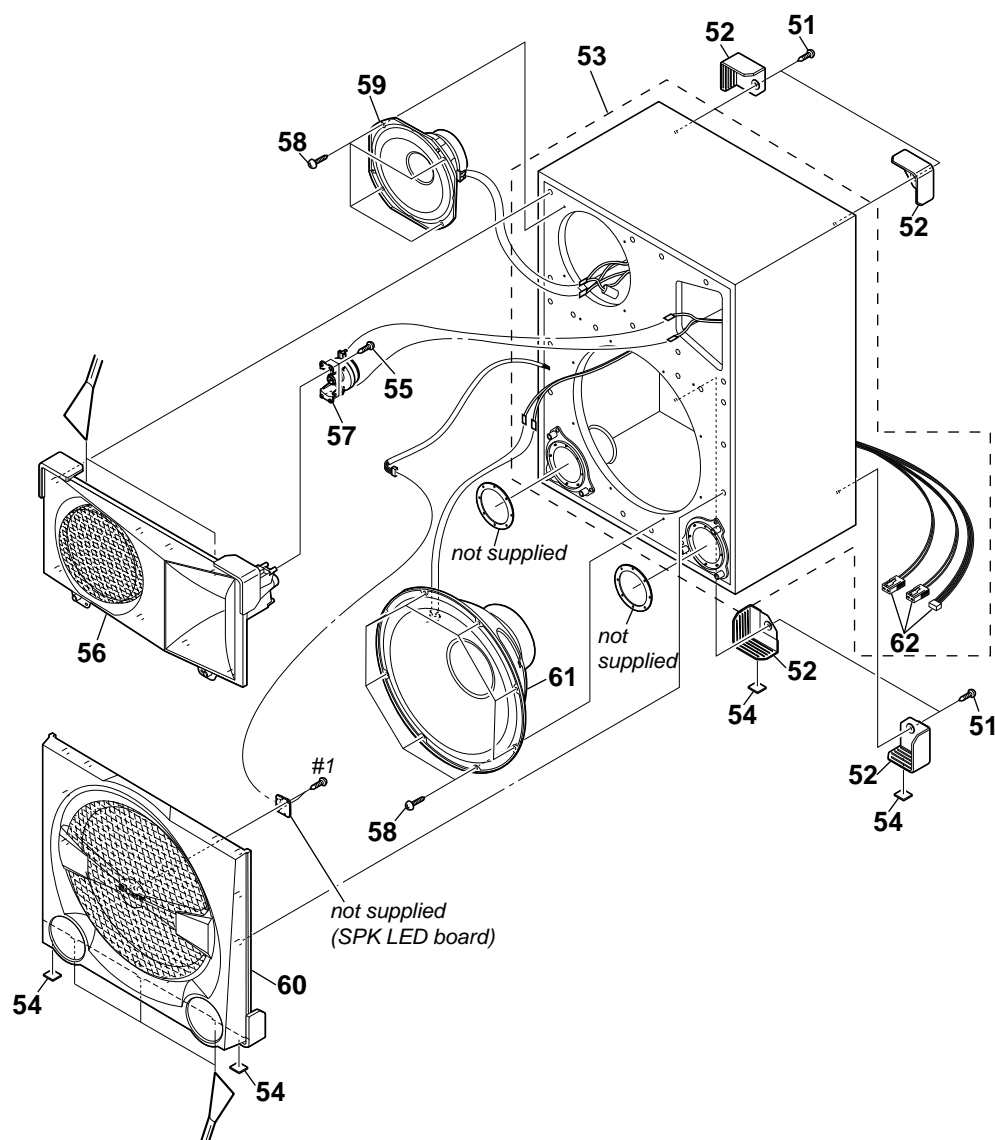
AR	: Argentina model
AUS	: Australian model
E2	: 120 V AC area in E model
E4	: African model
E51	: Chilean and Peruvian models
EA	: Saudi Arabia model
MX	: Mexican model
MY	: Malaysia model
RU	: Russian model
SAF	: South African model
TH	: Thai model

2-1. SS-SHAKE7



SS-SHAKE5/SHAKE7/SHAKE6D

Ver. 1.2

2-2. SS-SHAKE5/SHAKE6D

Note: This diagram is for L channel speaker.
The mechanical position of R channel is reversed.