




**Note:**

- -XX and -X mean standardized parts, so they may have some difference from the original one.
- Items marked “\*” are not stocked since they are seldom required for routine service. Some delay should be anticipated when ordering these items.
- The mechanical parts with no reference number in the exploded views are not supplied.

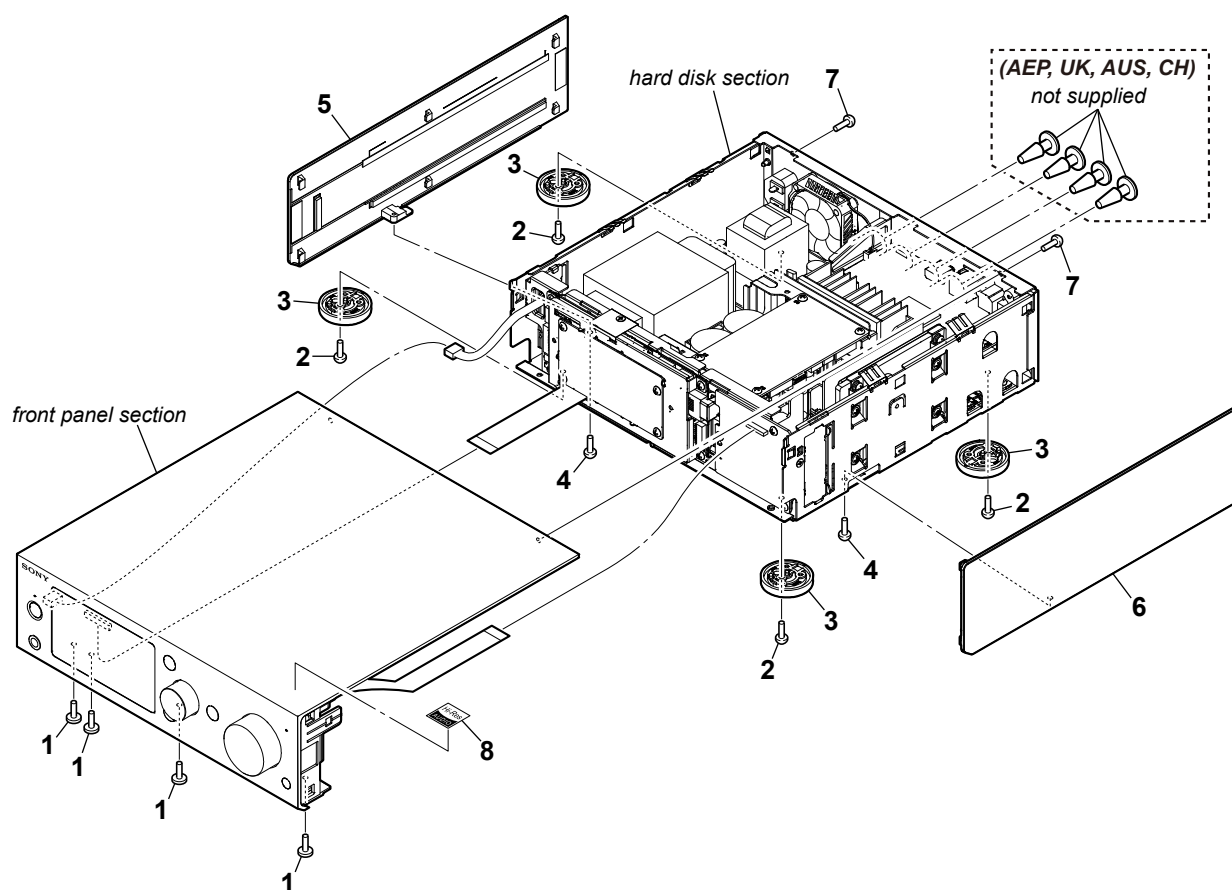
- Color Indication of Appearance Parts Example:  
 KNOB, BALANCE (WHITE) . . . (RED)  

↑  
Parts Color
↑  
Cabinet's Color
- Abbreviations  
 AUS : Australian model  
 CH : Chinese model  
 CND : Canadian model
- Color variations  
 Black : US, Canadian, AEP, UK models  
 Silver : All models

The components identified by mark  or dotted line with mark  are critical for safety.  
Replace only with part number specified.

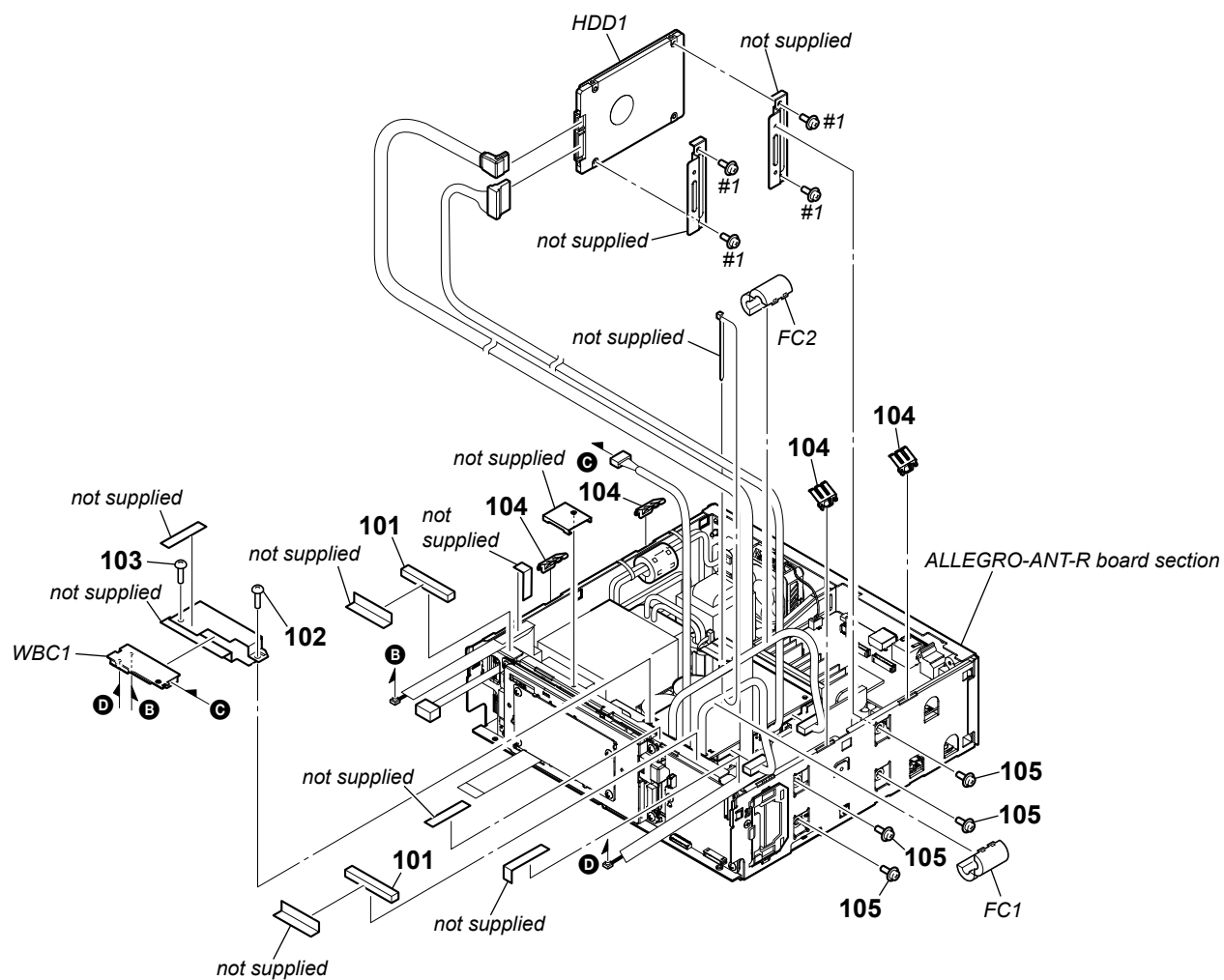
Les composants identifiés par une marque  sont critiques pour la sécurité.  
Ne les remplacer que par une pièce portant le numéro spécifié.

原理图和零件清单中标有△记号的零部件,或带有△记号的虚线所圈示的零部件,对于维系安全至关重要。因此只能以指定号码的零部件来更换。



- Rear bottom view

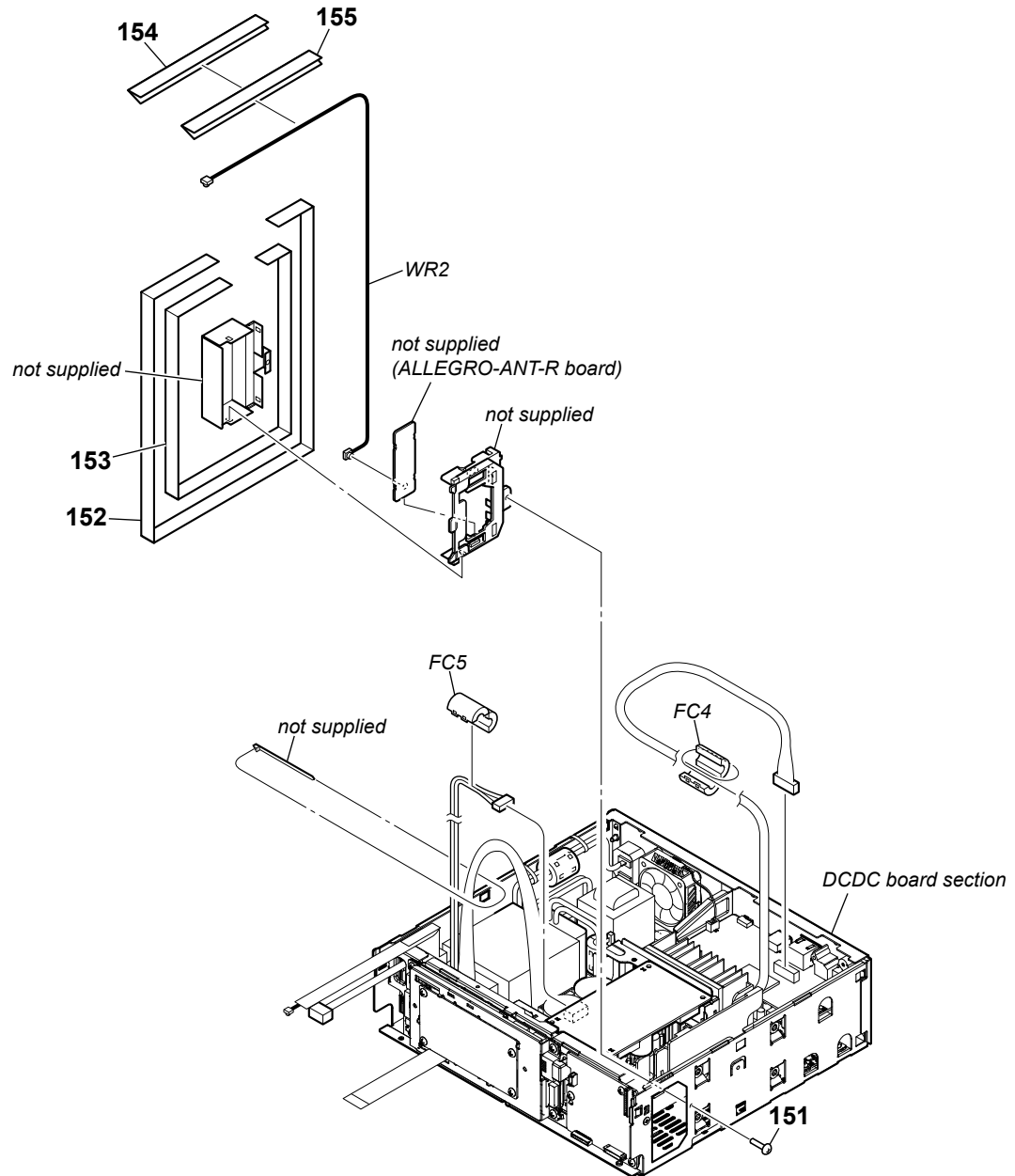
**Note 2:** Wires (flat type) for service is straight.  
When replacing wire (flat type), install it after bending it in the same form as that before replacement.

**6-3. HARD DISK SECTION**

**Note 1:** When the WLAN/BT COMBO card (Ref. No. WBC1) is replaced, refer to “NOTE OF REPLACING THE WLAN/BT COMBO CARD AND CHECKING METHOD OF NETWORK CONNECTION” on page 5.

**Note 2:** When the hard disk drive (Ref. No. HDD1) is replaced, refer to “NOTE OF REPLACING THE HARD DISK DRIVE (Ref. No. HDD1)” on page 4.

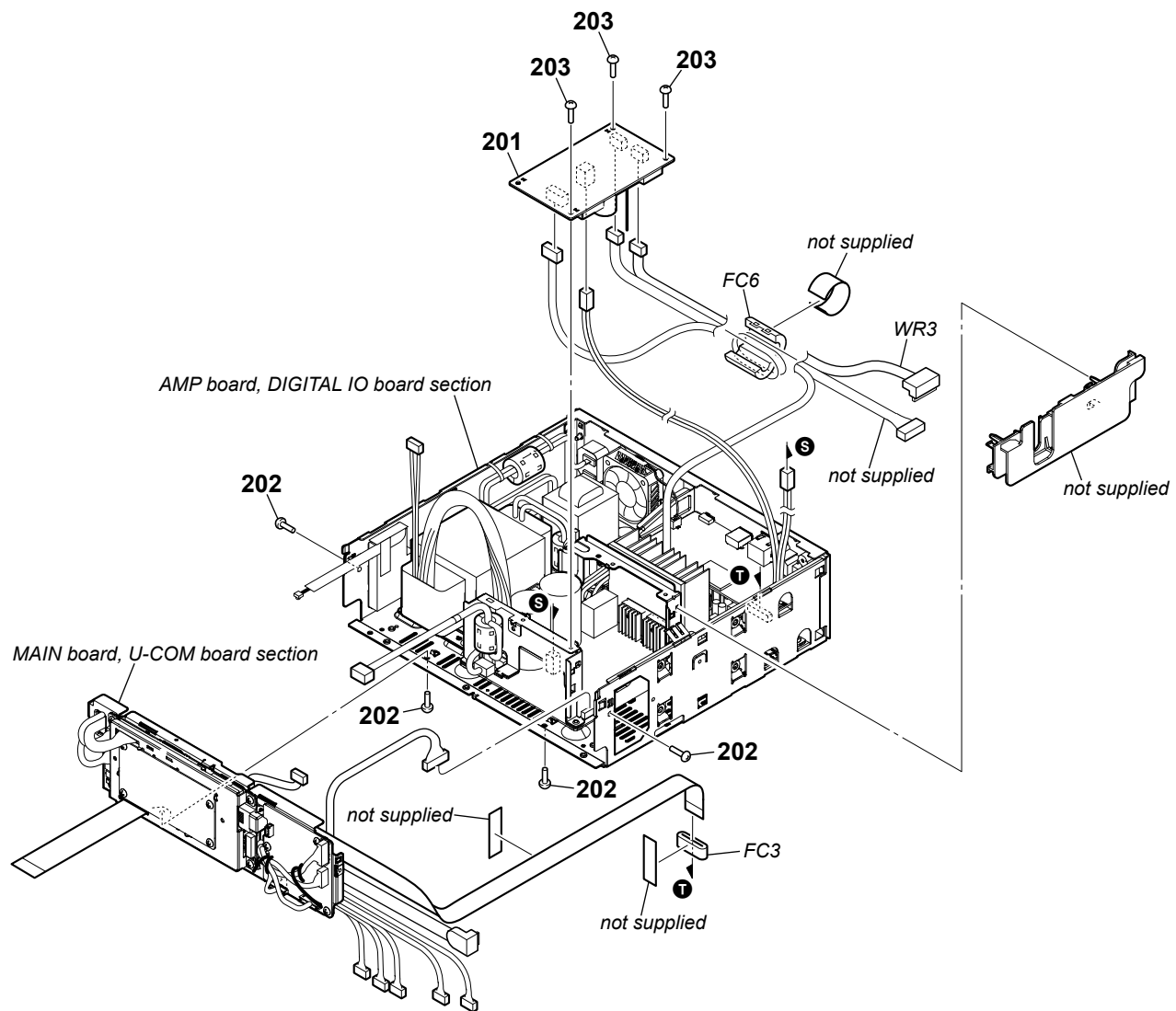
#### 6-4. ALLEGRO-ANT-R BOARD SECTION



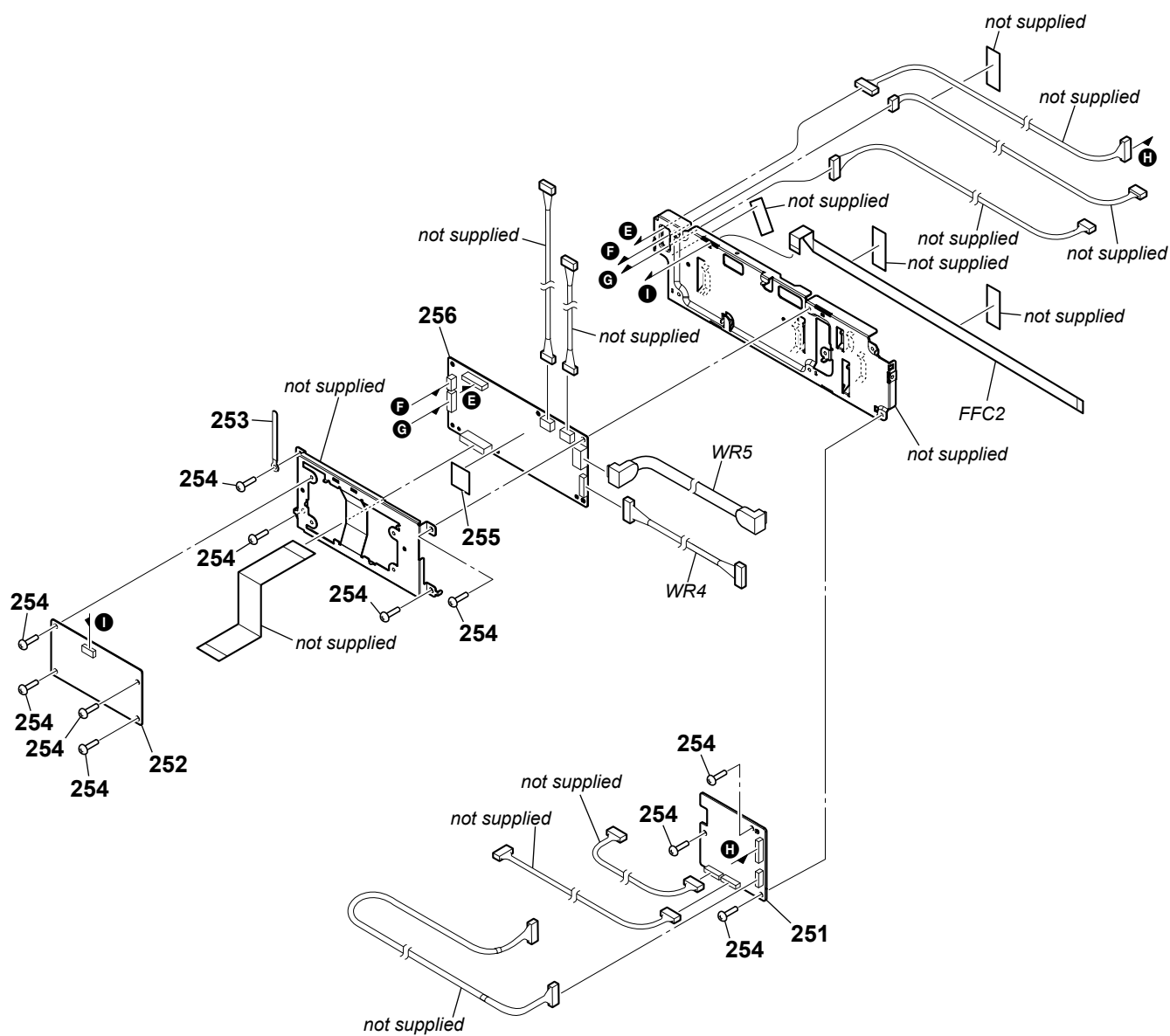
**Note:** When the coaxial (U.FL connector) cable (Ref. No. WR2) is replaced, refer to “NOTE OF REPLACING THE WLAN/BT COMBO CARD AND CHECKING METHOD OF NETWORK CONNECTION” on page 5.

# HAP-S1

## 6-5. DCDC BOARD SECTION



## 6-6. MAIN BOARD, U-COM BOARD SECTION

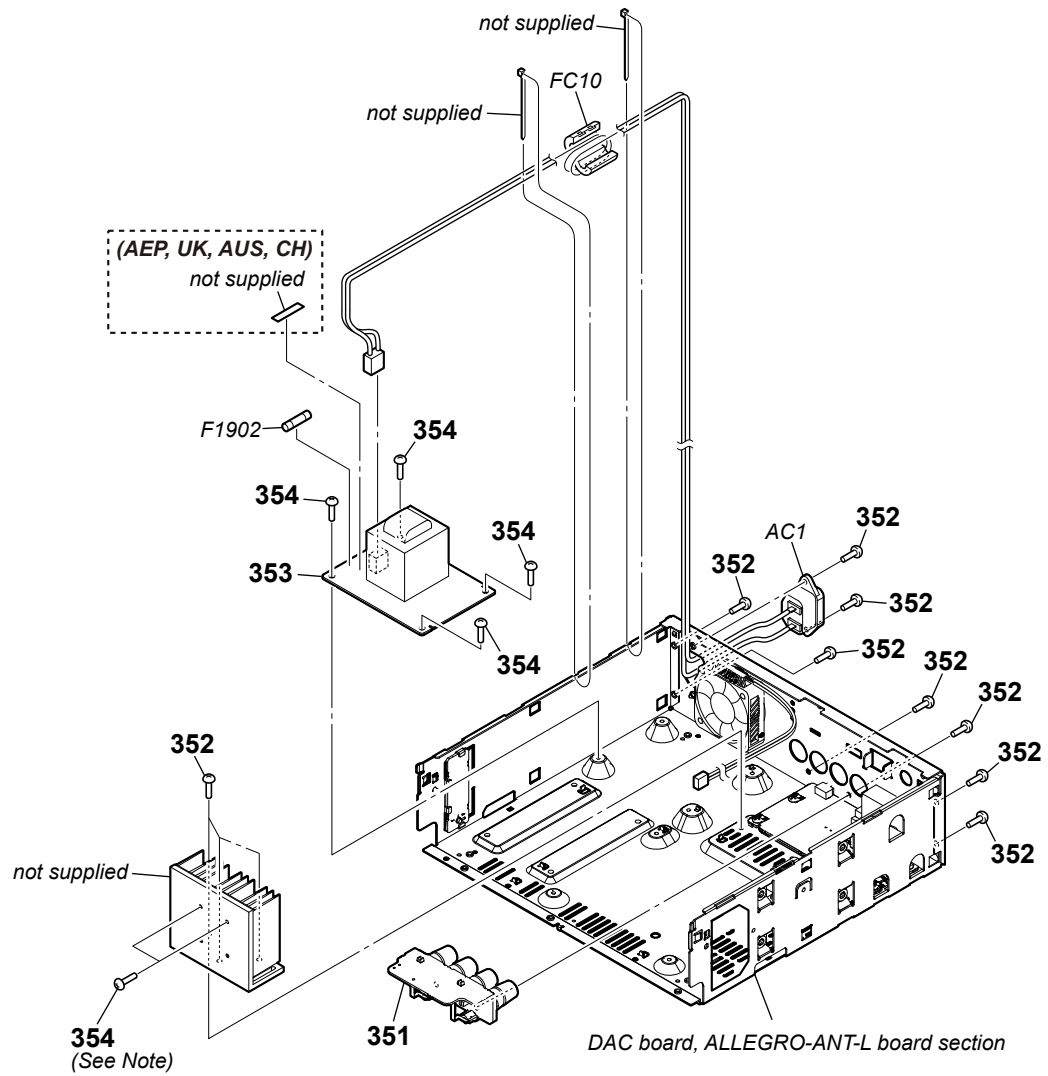


**Note 1:** When the complete MAIN board is replaced, refer to “NOTE OF REPLACING THE COMPLETE MAIN BOARD” and “NOTE OF REPLACING THE WLAN/BT COMBO CARD AND CHECKING METHOD OF NETWORK CONNECTION” on page 5.

**Note 2:** Wires (flat type) for service is straight.  
When replacing wire (flat type), install it after bending it in the same form as that before replacement.



## 6-8. SPTM BOARD, STANBY BOARD SECTION



**Note:** Two screws have been added  
in the middle of production.



**6-9. DAC BOARD, ALLEGRO-ANT-L BOARD SECTION**