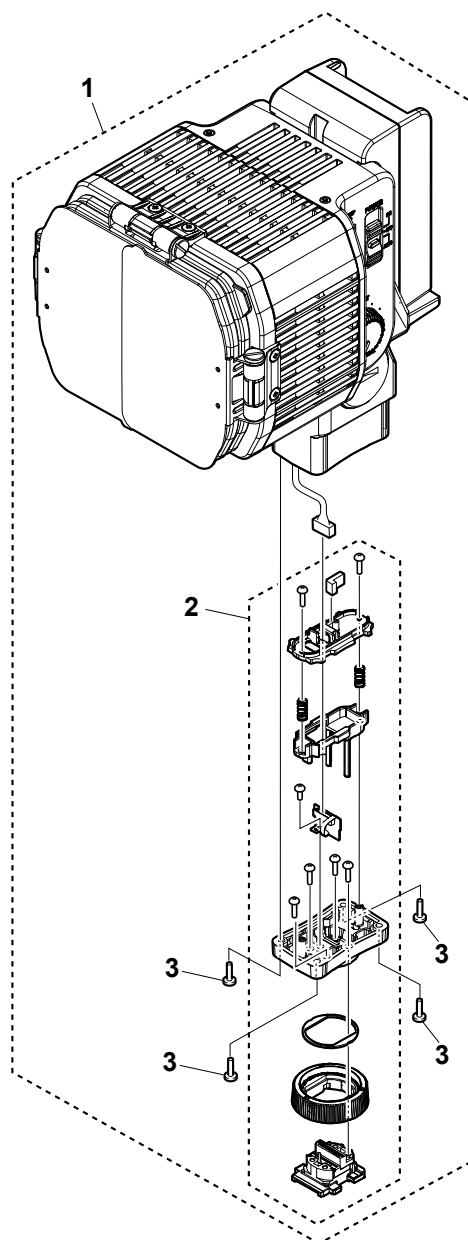


## SECTION 1 EXPLODED VIEW

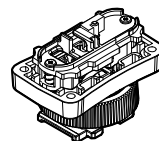
### Note:

- -XX and -X mean standardized parts, so they may have some difference from the original one.
- Items marked "\*" are not stocked since they are seldom required for routine service. Some delay should be anticipated when ordering these items.
- The mechanical parts with no reference number in the exploded views are not supplied.
- Color Indication of Appearance Parts Example:  
KNOB, BALANCE (WHITE) . . . (RED)

↑                      ↑  
Parts Color   Cabinet's Color

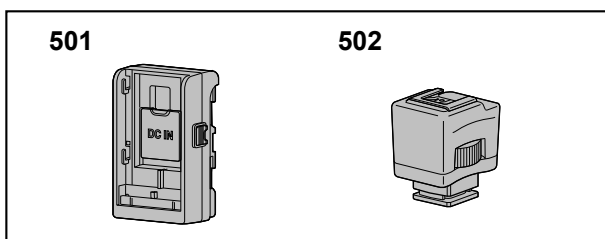


**Note 1:** The repair part for the SHOE HOLDER (S) ASSY (Ref. No. 2) comes assembled as shown in the figure below.  
When installing the SHOE HOLDER (S) ASSY to the UNIT, do so after disassembly.



**Note 2:** When removing the SHOE HOLDER (S) ASSY (Ref. No. 2) from the UNIT, be careful not to break the MI SHOE wire.  
When removing the SHOE HOLDER (S) ASSY, disconnect the connector so that there is no pressure on the MI SHOE wire.

## SECTION 2 ACCESSORIES



**Note:** The components identified by mark  $\triangle$  or dotted line with mark  $\triangle$  are critical for safety. Replace only with part number specified.

**Note:** Les composants identifiés par une marque  $\triangle$  sont critiques pour la sécurité. Ne les remplacer que par une pièce portant le numéro spécifié.

**注意:** 原理图和零件清单中标有 $\triangle$ 记号的零部件, 或带有 $\triangle$ 记号的虚线所圈示的零部件, 对于维系安全至关重要。因此只能以指定号码的零部件来更换。

- Items marked “\*” are not stocked since they are seldom required for routine service. Some delay should be anticipated when ordering these items.