

SECTION 5

REPAIR PARTS LIST

5-1. EXPLODED VIEWS

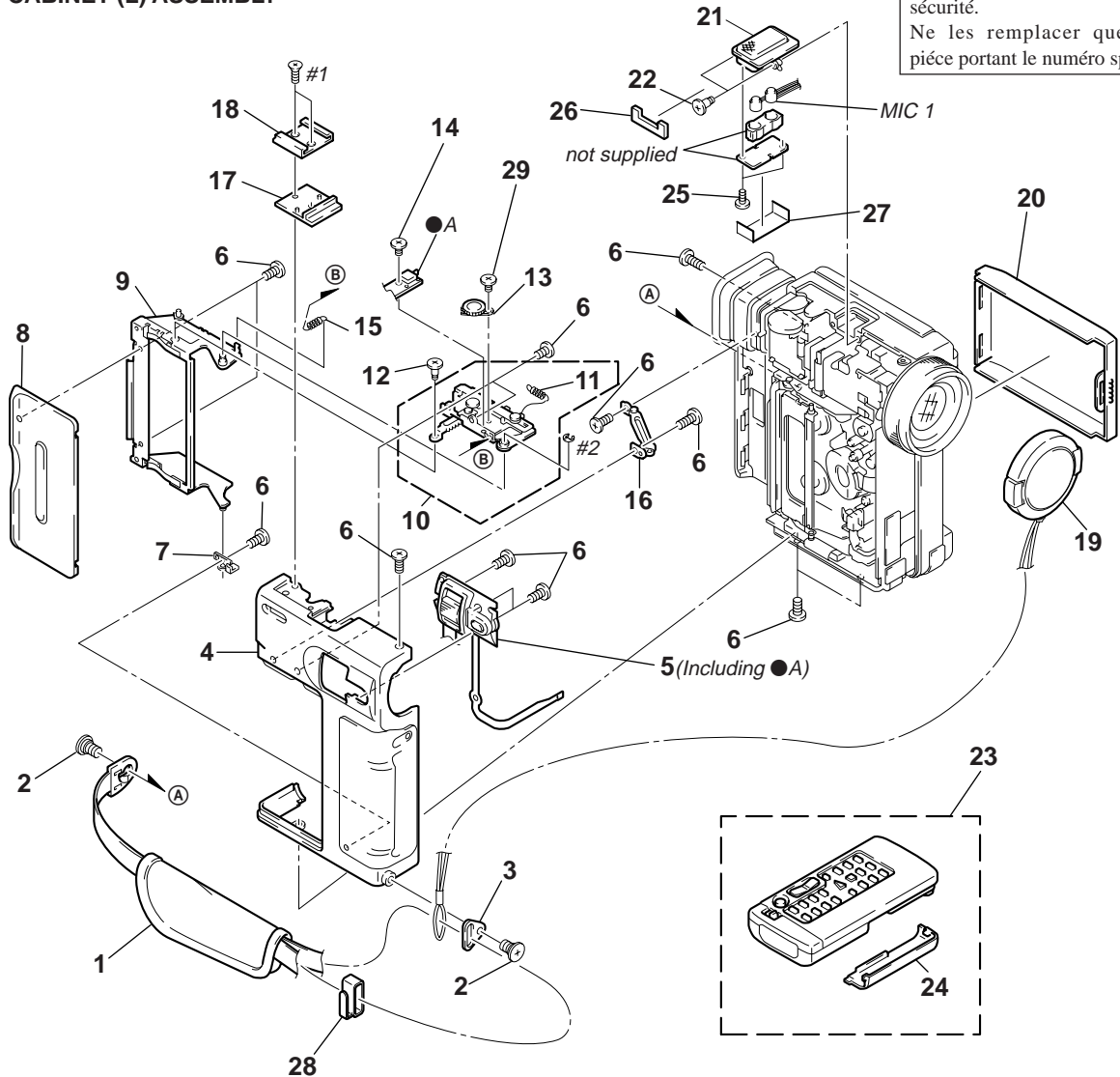
NOTE:

- -XX, -X mean standardized parts, so they may have some difference from the original one.
- Items marked "*" are not stocked since they are seldom required for routine service. Some delay should be anticipated when ordering these items.
- The mechanical parts with no reference number in the exploded views are not supplied.
- Hardware (# mark) list and accessories and packing materials are given in the last of this parts list.
- Canadian model is abbreviated as CND.
- Tourist model is abbreviated as JE.

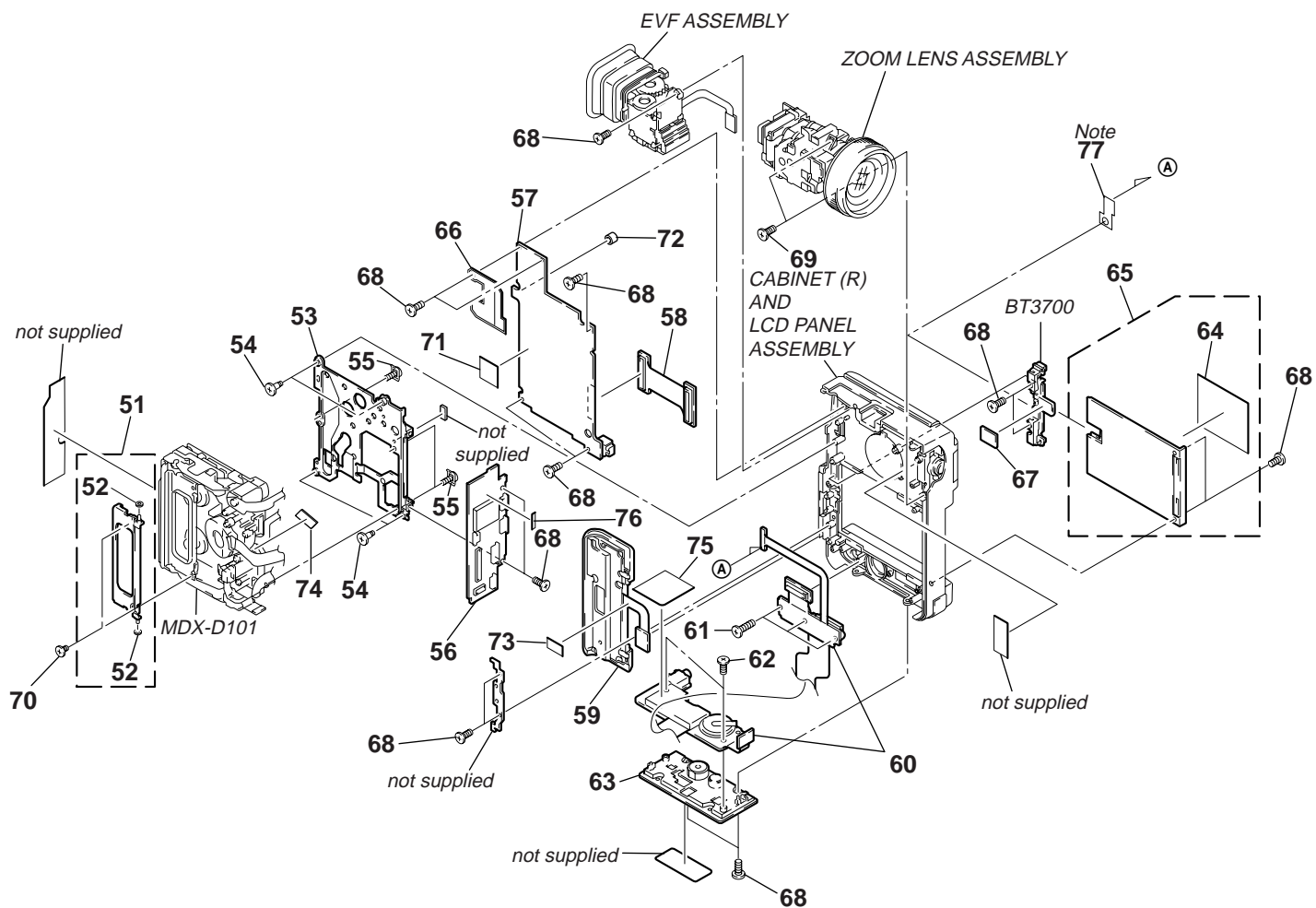
The components identified by mark \triangle or dotted line with mark \triangle are critical for safety. Replace only with part number specified.

Les composants identifiés par une marque \triangle sont critiques pour la sécurité. Ne les remplacer que par une pièce portant le numéro spécifié.

5-1-1. CABINET (L) ASSEMBLY




5-1-2. MAIN BOARDS ASSEMBLY

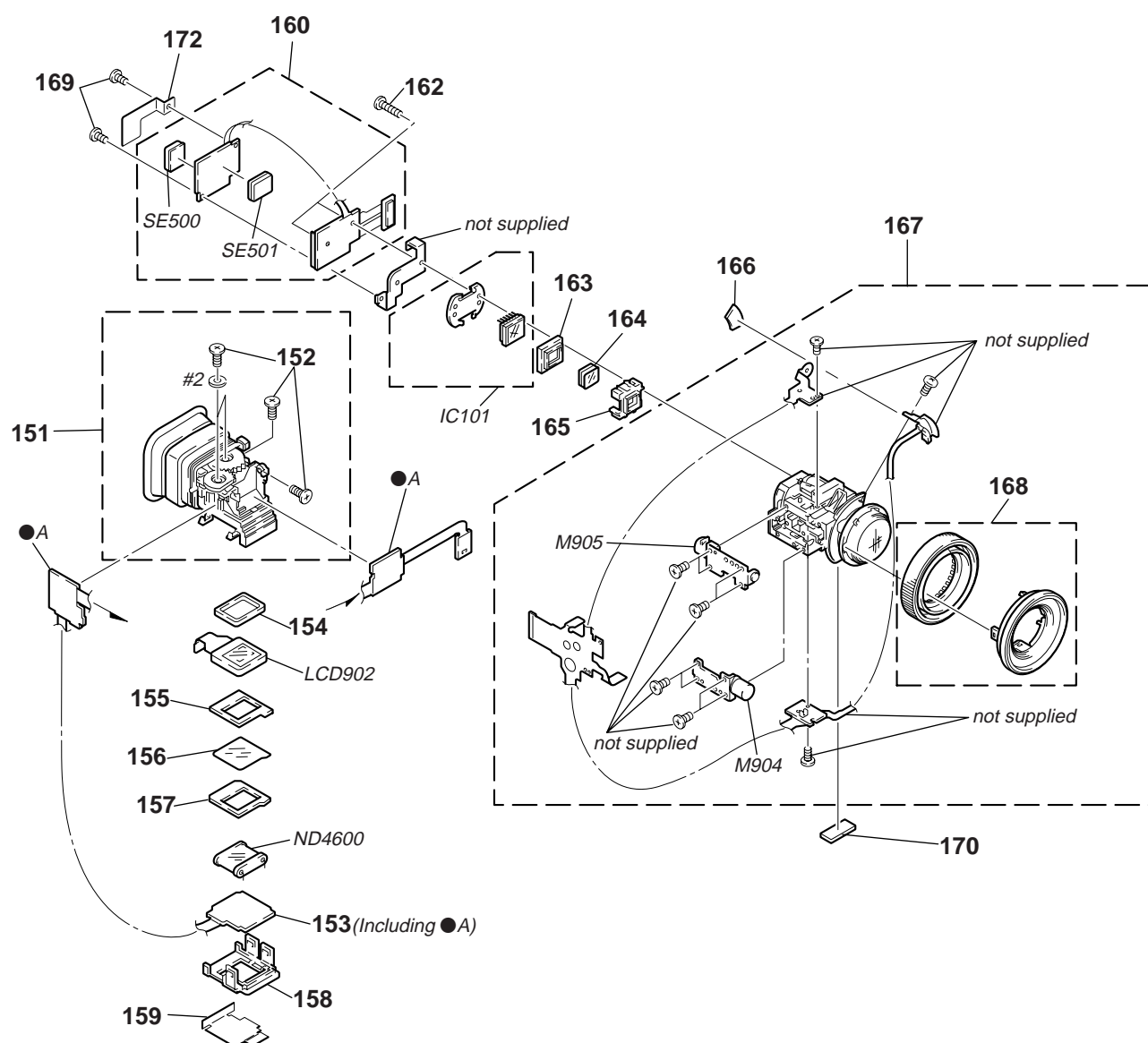


Note : No.77 about FP-556 and SD-29
 DCR-PC7 : Processing with FP-556 flexible board.
 DCR-PC7E : Processing with the read leaf plate and SD-29 board.
 Two of the above will be installed to the DD-91 board in future.

[illegible]

Les composants identifiés par une marque  sont critiques pour la sécurité.
Ne les remplacer que par une pièce portant le numéro spécifié.

5-1-4. EVF AND ZOOM LENS ASSEMBLIES (VCL-4010VA)

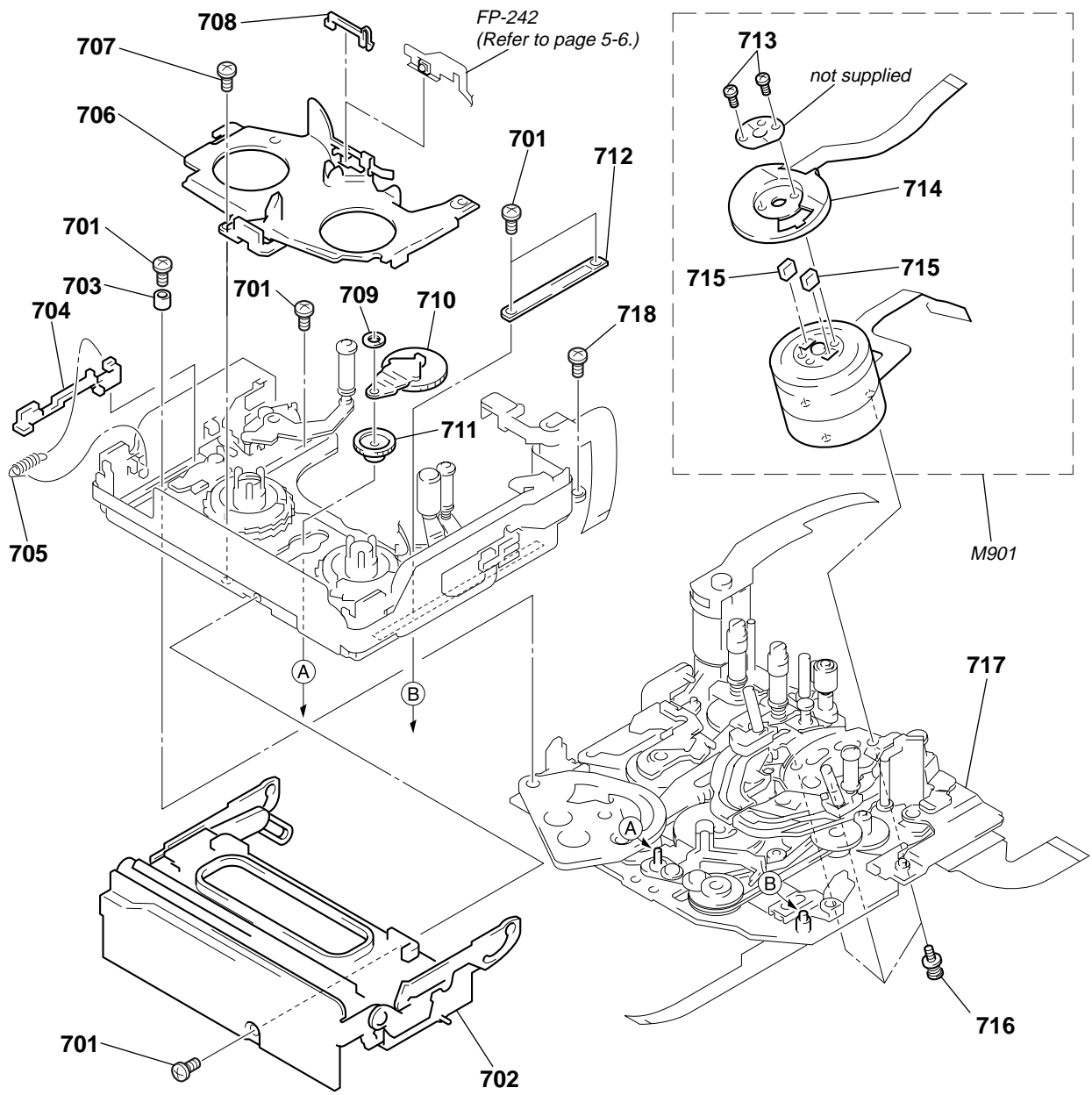


Be sure to read "Note on the CCD Imager replacement" on page 4-12 when changing the CCD imager.

The components identified by mark Δ or dotted line with mark Δ are critical for safety. Replace only with part number specified.

Les composants identifiés par une marque Δ sont critiques pour la sécurité. Ne les remplacer que par une pièce portant le numéro spécifié.

5-1-5. CASSETTE COMPARTMENT AND DRUM ASSEMBLIES



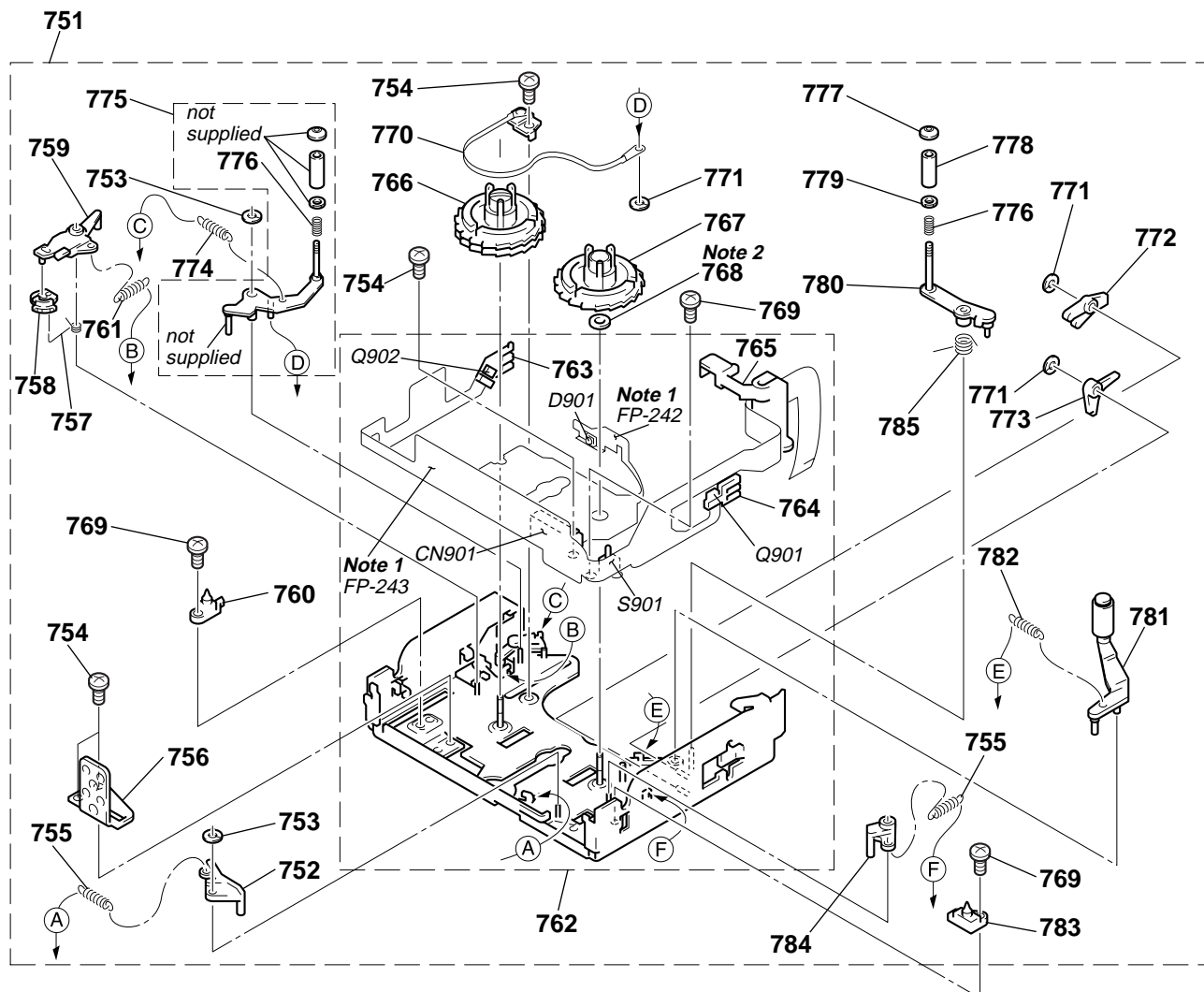
5-1-6. LS CHASSIS BLOCK ASSEMBLY

Note 1 : About FP-242 and FP-243

The FP-242 and FP-243 flexible boards are installed to a chassis with a hot press, which are included in the Ref No. 762 LS chassis (S) assembly. They are not supplied separately because the high precision for installation is needed.

Note 2 : Selecting the T washer

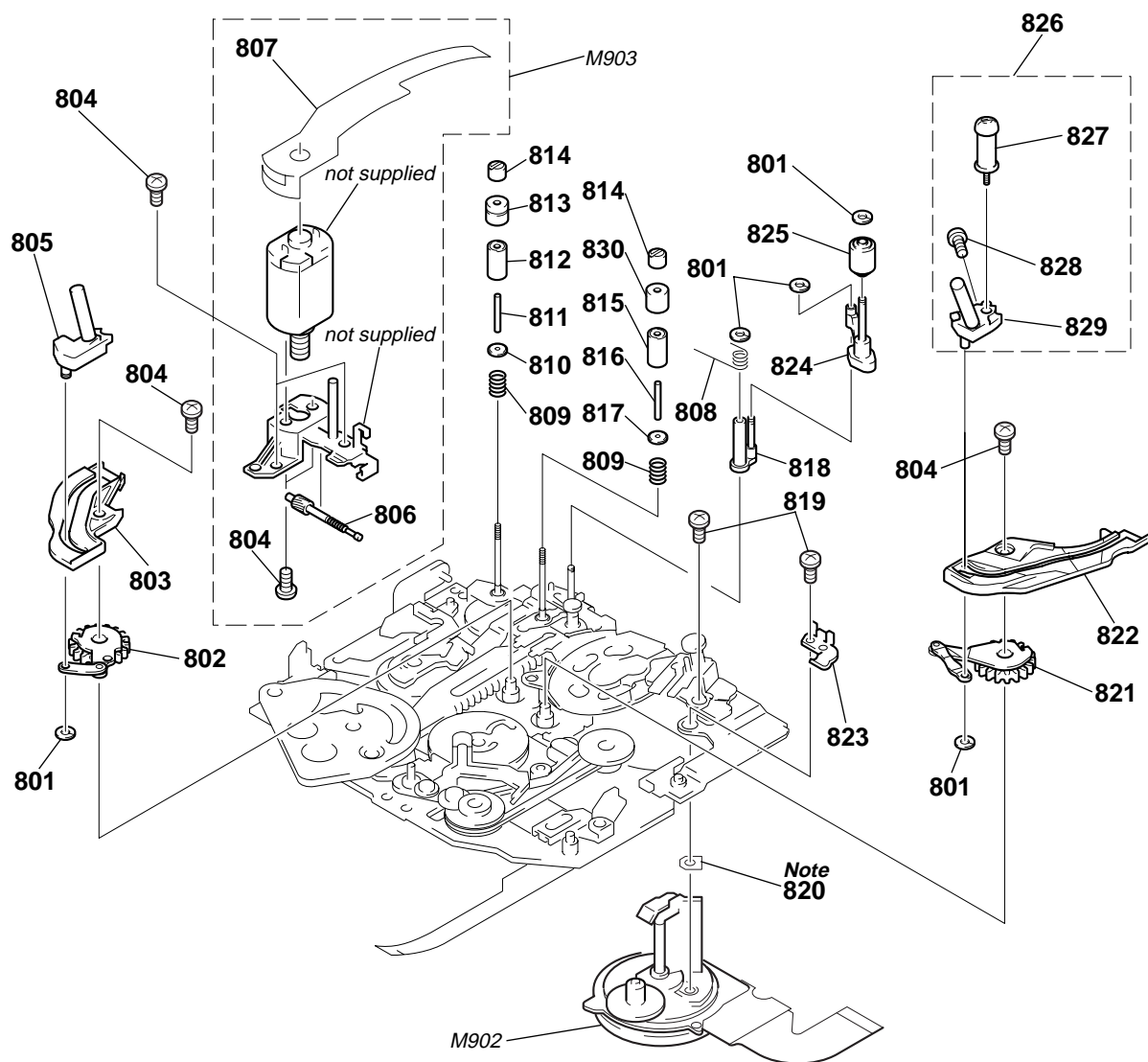
Select proper parts for the Ref No. 768 T washer according to "Height adjustment for T reel table assembly" on page 23 in the "DFV MECHANICAL ADJUSTMENT MANUAL I" (9-913-815-11).



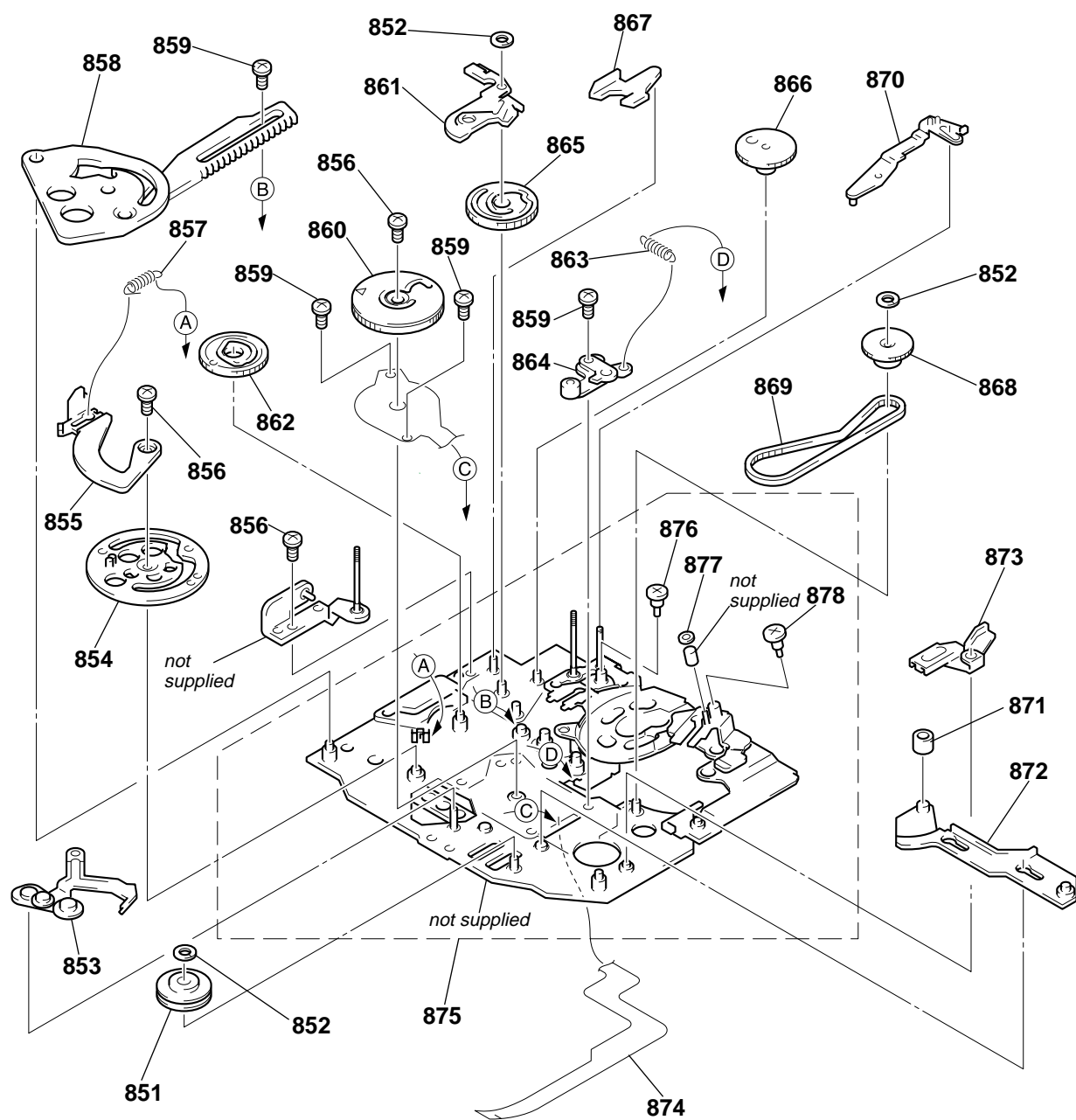
Remark

5-1-7. MECHANISM CHASSIS ASSEMBLY (1)

Note : Be sure to remember the installed position (one of two positions), direction and thickness of the Ref. No. 820 (head spacer) when the M902 (capstan motor) is removed. Refer to "3-9. Capstan motor" on page 15 in the DV MECHANICAL ADJUSTMENT MANUAL I (9-973-815-11) for details. The thickness of head spacer is normally 100 μ m. If it is lost, two 50 μ m head spacers will be needed. Be careful not to loose it.



5-1-8. MECHANISM CHASSIS ASSEMBLY (2)



DCR-PC7/PC7E

RMT-806/807

SONY®

SERVICE MANUAL


US Model
Canadian Model
DCR-PC7
AEP Model
UK Model
E Model
DCR-PC7E
Tourist Model
DCR-PC7/PC7E

SUPPLEMENT-1

File this supplement-1 with your service manual.

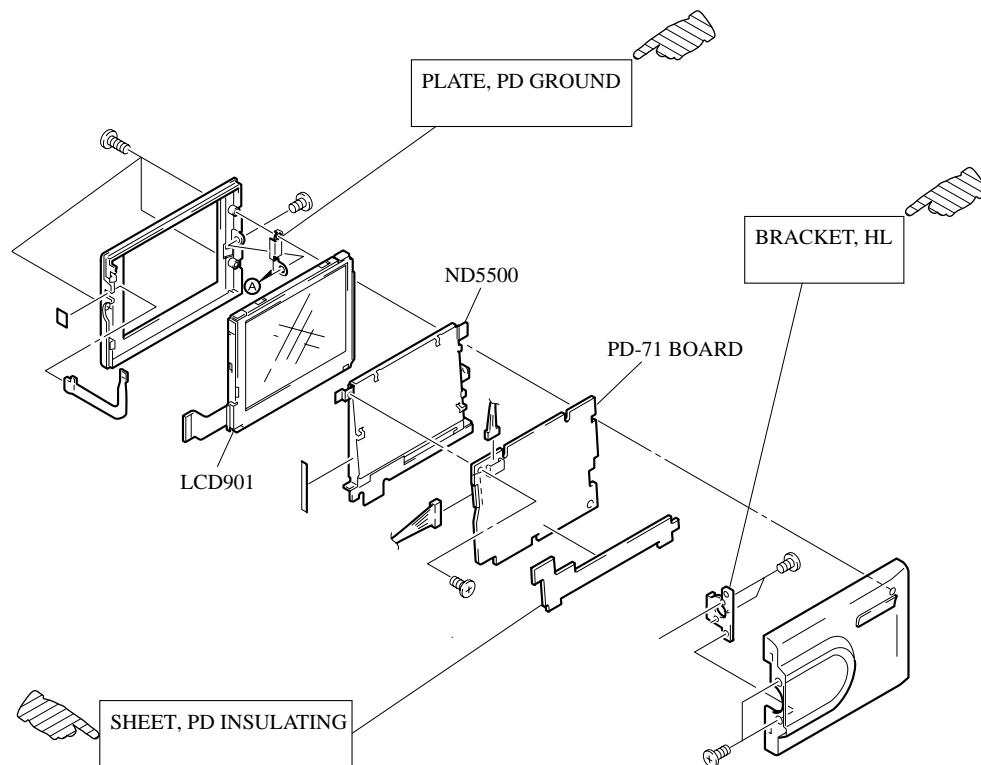
ADDITION FOR SUPPLIED PARTS FOR LIQUID CRYSTAL DISPLAY PANEL SECTION

(96-043)

- The  mark parts of liquid crystal display panel section was not supplied. But it changed to one of supplied parts because it is necessary for servicing.

 : Changed portion

Page 5-3 **CABINET (R) AND LCD PANEL ASSEMBLIES**



US Model
Canadian Model
DCR-PC7
AEP Model
UK Model
E Model
DCR-PC7E
Tourist Model
DCR-PC7/PC7E

SYS SET