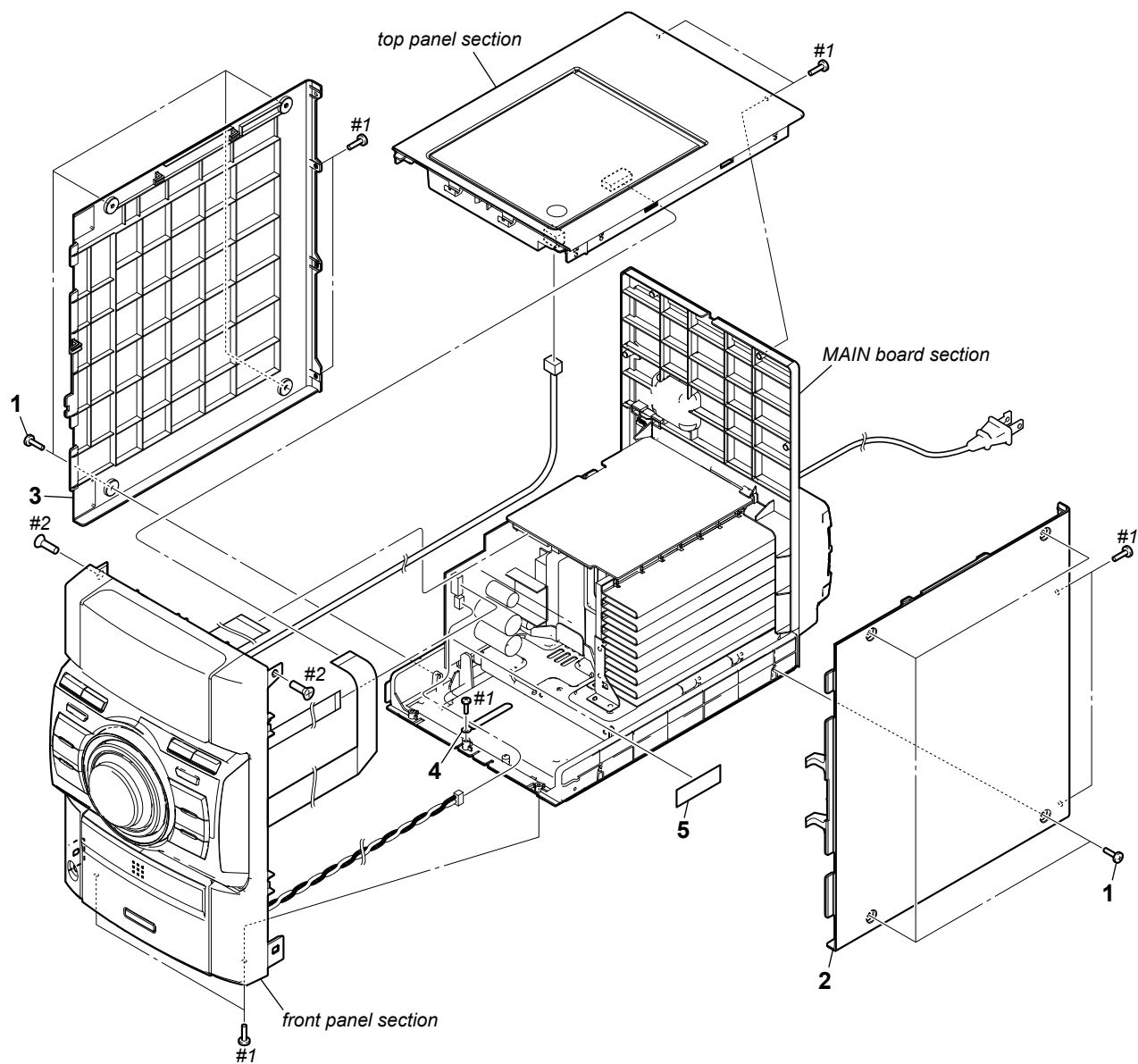
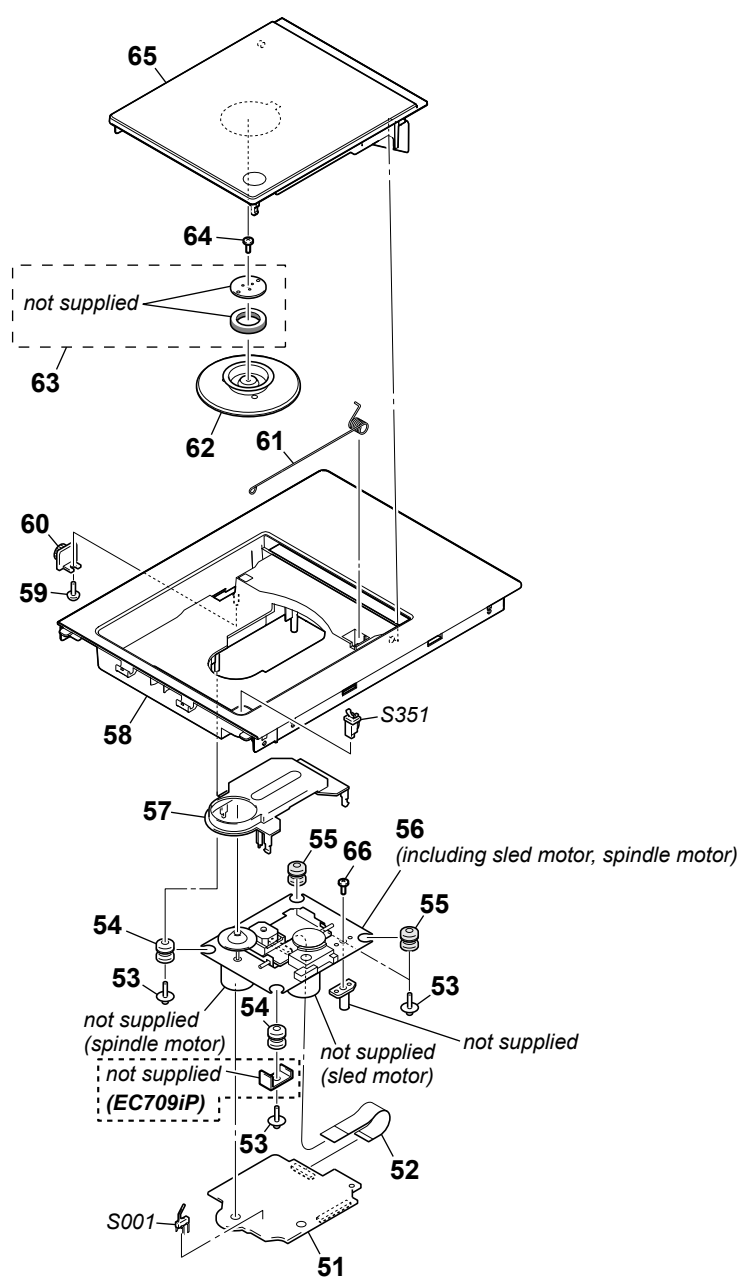


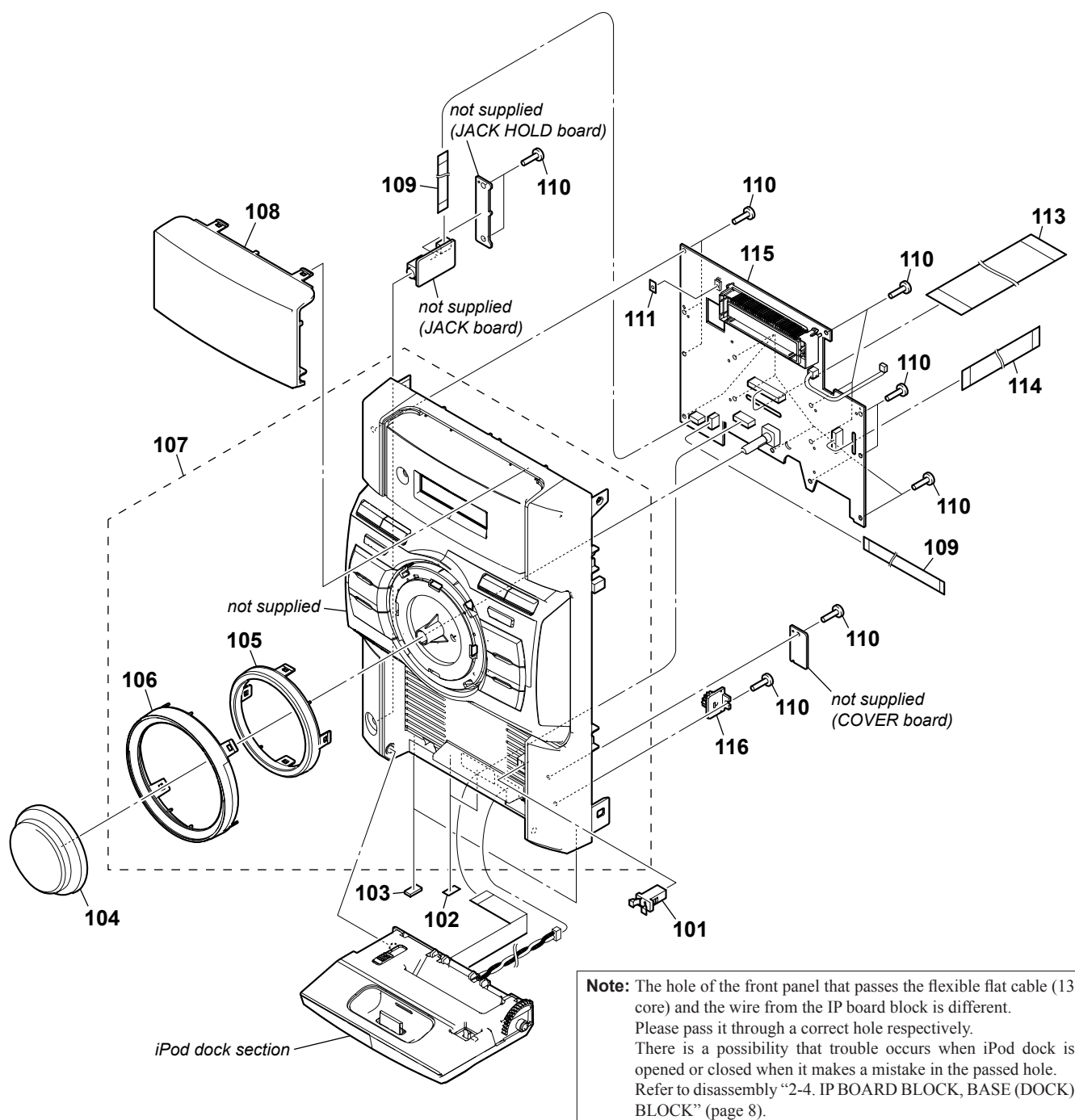
## SECTION 6 EXPLODED VIEWS

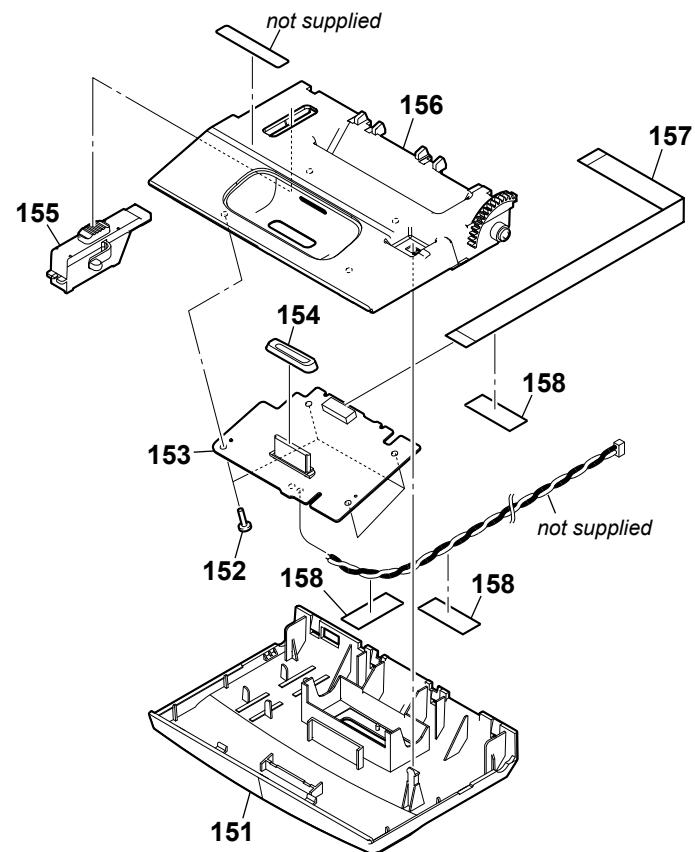
### 6-1. OVERALL SECTION



## 6-2. TOP PANEL SECTION



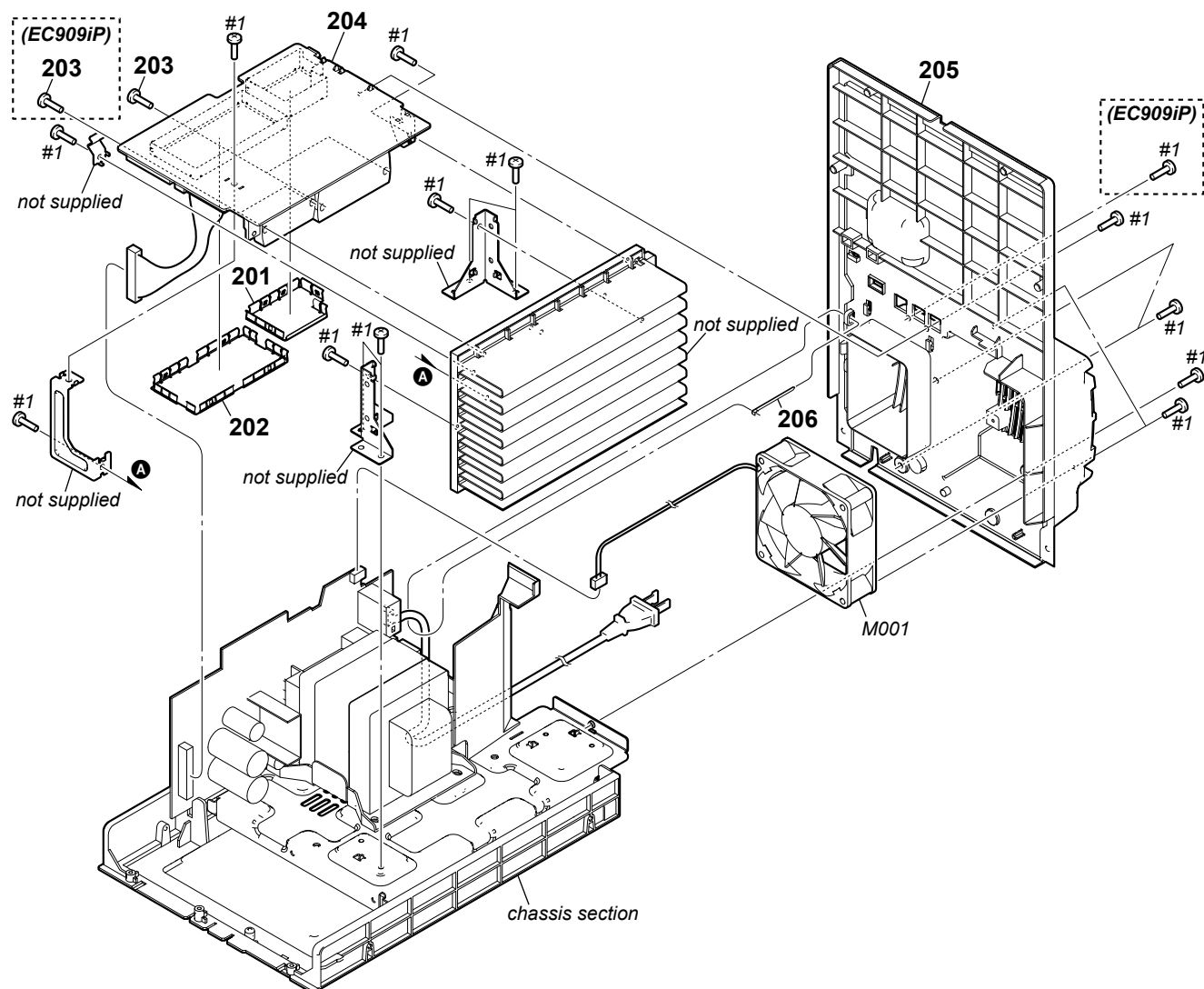
**HCD-EC709iP/EC909iP****6-3. FRONT PANEL SECTION**

**6-4. iPod DOCK SECTION**

**HCD-EC709iP/EC909iP****Ver. 1.1****6-5. MAIN BOARD SECTION**

**Note 1:** The MAIN board of HCD-EC909iP has been changed from the midway of production due to changes of the IC604 and IC606. Refer to “NOTE OF REPLACING THE IC604 OR IC606 ON THE MAIN BOARD” on page 5 or SUPPLEMENT-1 for details. (HCD-EC909iP only)

**Note 2:** Cover (tuner top) and cover (function top) cannot re-used. When these parts are removed, new parts must be replaced.



## 6-6. CHASSIS SECTION

