

## SECTION 8 REPAIR PARTS LIST

### 8-1. EXPLODED VIEWS

#### NOTE:

- -XX and -X mean standardized parts, so they may have some difference from the original one.
- Items marked "\*" are not stocked since they are seldom required for routine service. Some delay should be anticipated when ordering these items.
- The mechanical parts with no reference number in the exploded views are not supplied.

- Color Indication of Appearance Parts

Example:

KNOB, BALANCE (WHITE) . . . (RED)

↑                      ↑  
Parts Color    Cabinet's  
                         Color

#### • Abbreviation

AUS : Australia/New Zealand Model

E : Latin America Model

MX : Mexican Model

SP : Singapore Model

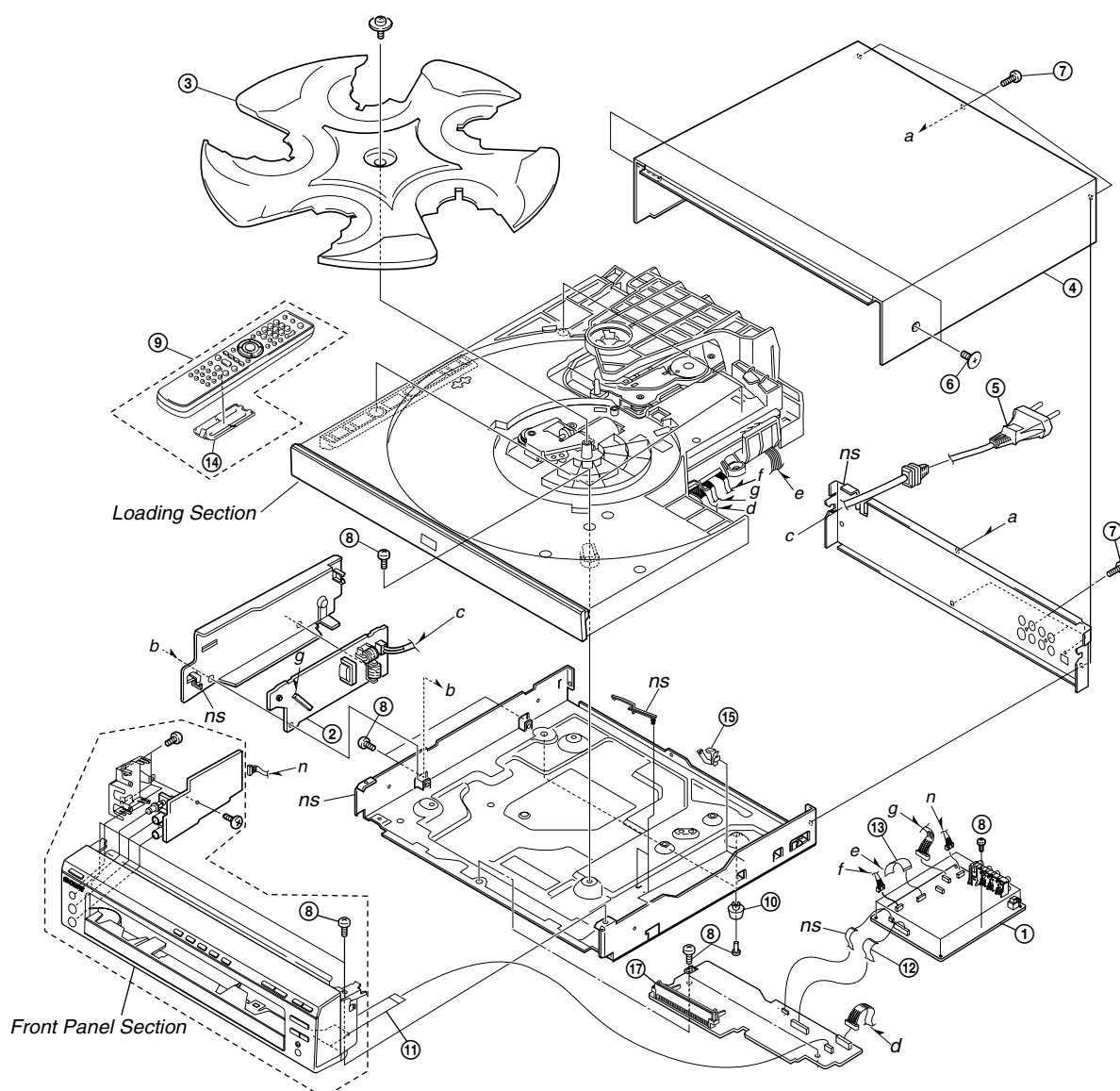
RUS : Russian Model

TH : Thailand Model

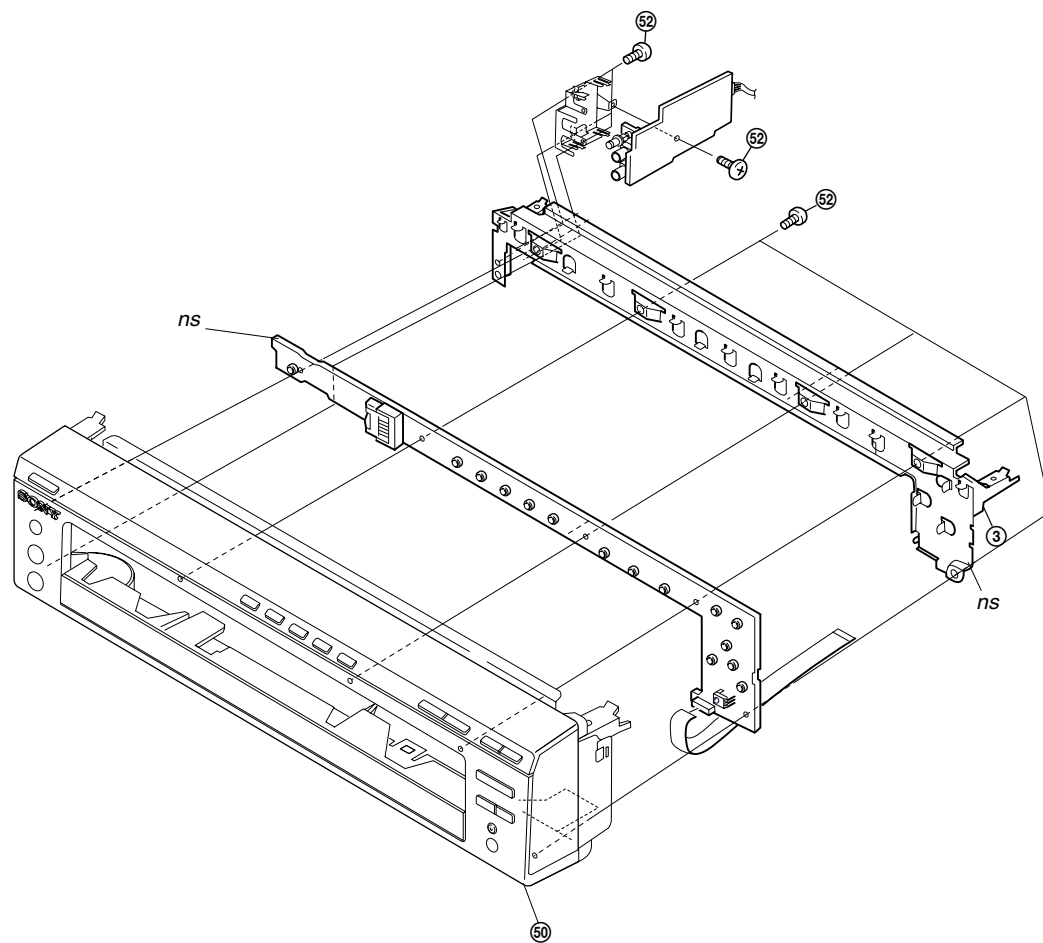
The components identified by mark  $\triangle$  or dotted line with mark  $\triangle$  are critical for safety. Replace only with part number specified.

#### 8-1-1. MAIN SECTION

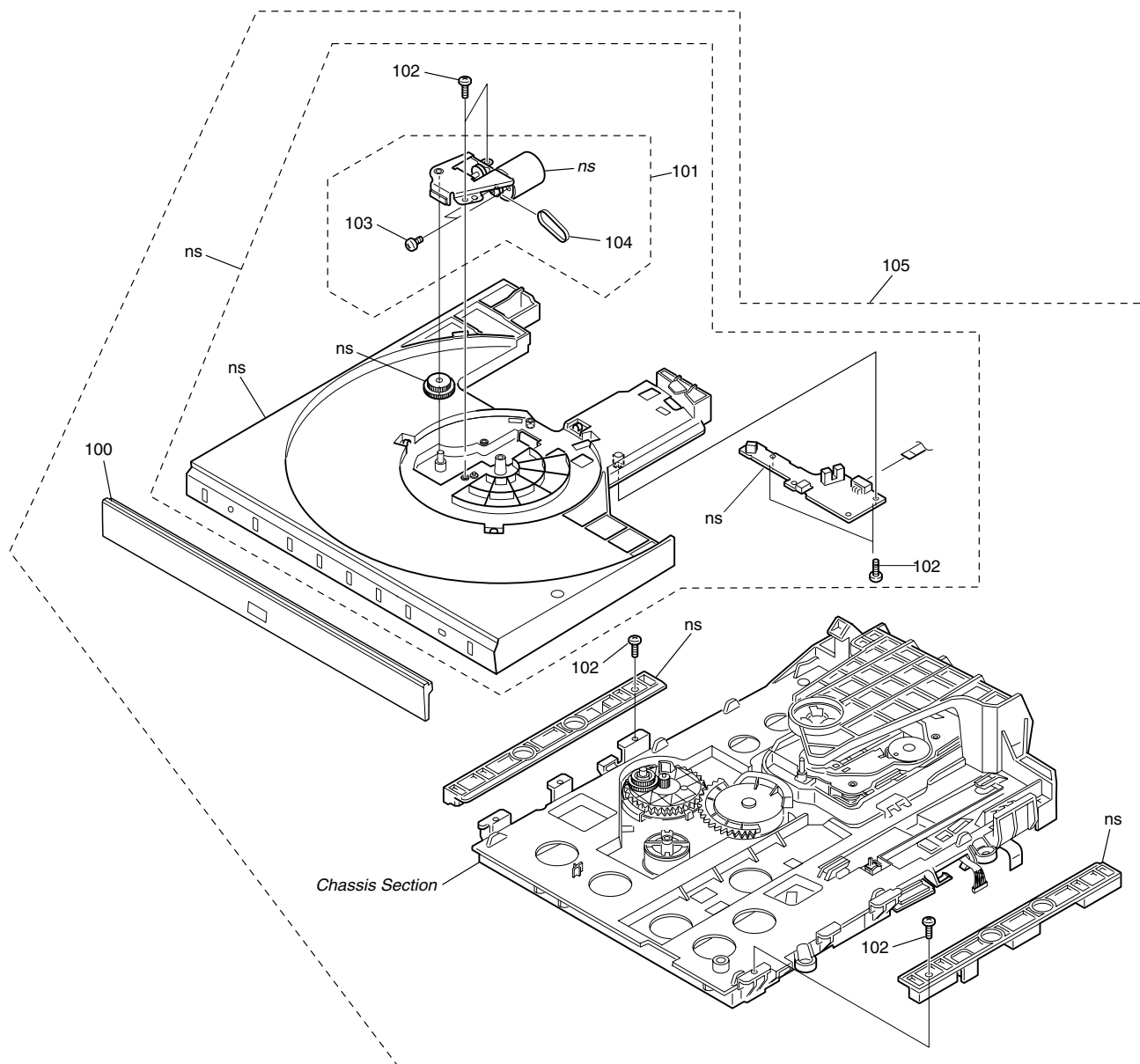
ns : not supplied



### 8-1-2. FRONT PANEL SECTION



### 8-1-3. LOADING SECTION



# 8-1-4. CHASSIS SECTION

