

RDR-VX410

RMT-D224P

SERVICE MANUAL

*AEP Model
UK Model
French Model
Australian Model
New Zealand Model*



TS-10 MECHANISM

Refer to the SERVICE MANUAL of VHS MECHANICAL ADJUSTMENT MANUAL VII for MECHANICAL ADJUSTMENTS. (9-921-790-11)

SPECIFICATIONS

System

[DVD recorder section]

Laser

Semiconductor laser

Audio recording format

Dolby Digital

Video recording format

MPEG Video

[VCR section]

Format

VHS PAL standard

Video recording system

Rotary head helical scanning FM system

Video heads

Double azimuth four heads

Tape speed

SP: PAL 23.39 mm/s

LP: PAL 11.70 mm/s

EP: NTSC 11.12 mm/s,
playback only

Maximum recording/playback time

10 hrs. in LP mode (with E300 tape)

Rewind time

Approx. 1 min (with E180 tape)

[Tuner section]

Channel coverage

RDR-VX410 (B, E1, E2):

PAL (B/G, D/K)

VHF E2 to E12

VHF Italian channel A to H

UHF E21 to E69

CATV S01 to S05, S1 to S41

HYPER S21 to S41

RDR-VX410 (B):

SECAM (L): (For French model)

VHF F2 to F10

UHF F21 to F69

CATV B to Q

HYPER S21 to S41

RDR-VX410 (GI):

PAL (I)

VHF: Ireland A to J, South Africa 4 to 13

UHF: B21 to B69

CATV: S01 to S05, S1 to S20

HYPER: S21 to S41

RDR-VX410 (AU2):

PAL (B/G)

VHF: E2 to E12

UHF: E21 to E69

CATV: S01 to S05, S1 to S41

PAL (B/B)

VHF: R1 to R12

UHF: R21 to R69

The above channel coverage merely ensures the channel reception within these ranges. It does not guarantee the ability to receive signals in all circumstances.

Aerial out

75-ohm asymmetrical aerial socket

[Timer section]

Clock

Quartz locked

Timer indication

24-hour cycle

Timer setting

12 programmes in total (max.)

Inputs and outputs

LINE 2 IN

VIDEO IN, phono jack (1)

Input signal: 1 Vp-p, 75 ohms, unbalanced,
sync negative

AUDIO IN, phono jacks (2)

Input level: 327 mVrms

Input impedance: more than 47 kilohms

S VIDEO, 4-pin, mini-DIN jack (1)

Y: 1.0 Vp-p, unbalanced, sync negative

C: 0.286 Vp-p, load impedance 75 ohms

— Continued on next page —



SHOWVIEW® VIDEOplus+

VIDEO CASSETTE RECORDER/
DVD RECORDER

SONY®

8-1 EXPLODED VIEWS

NOTE:

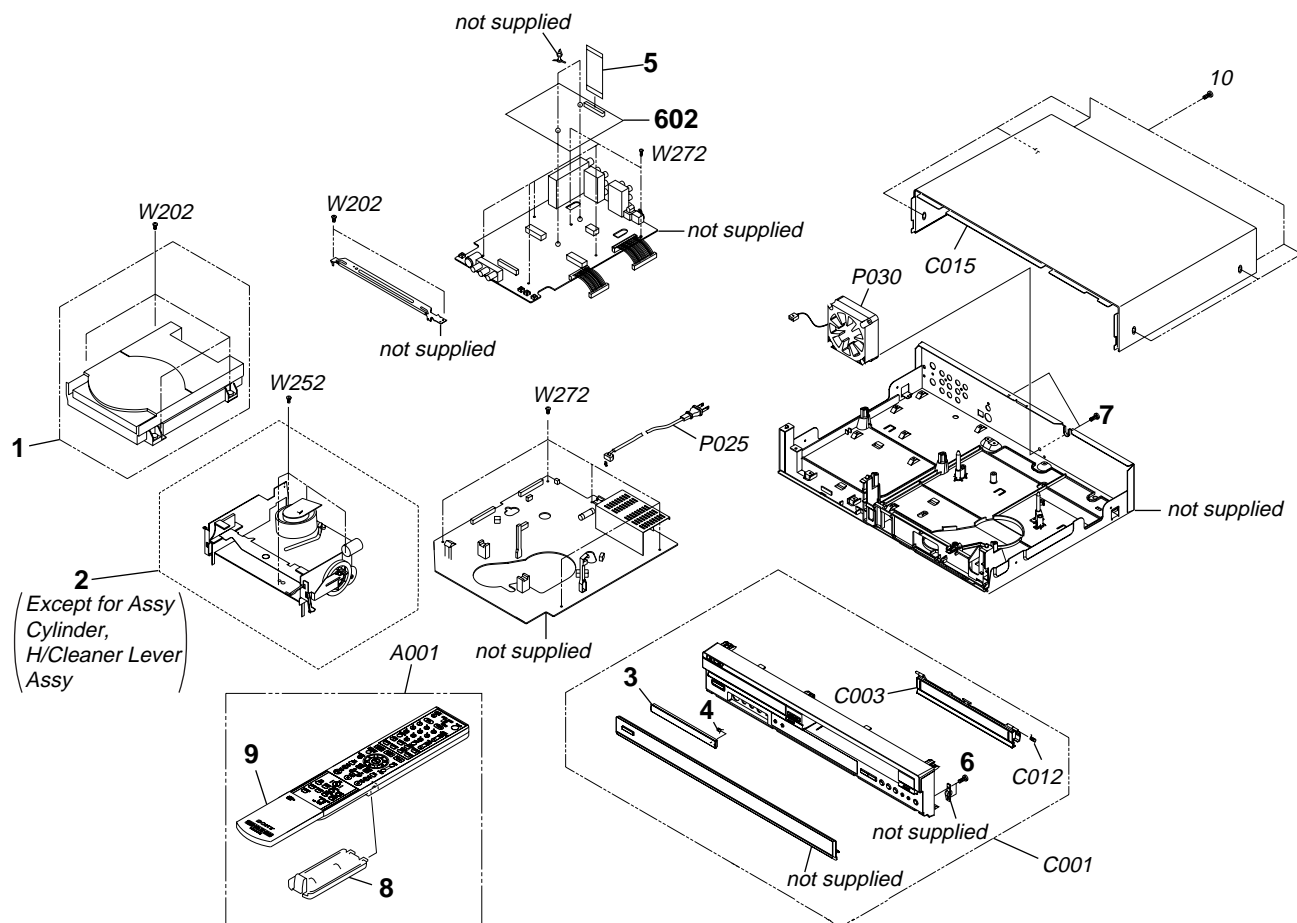
- -XX, -X mean standardized parts, so they may have some differences from the original one.
- Items marked "*" are not stocked since they are seldom required for routine service. Some delay should be anticipated when ordering these items.

- The mechanical parts with no reference number in the exploded views are not supplied.
- Abbreviation
 - AU2 : Australian, New Zealand models
 - B : French model
 - E1, E2 : AEP model
 - GI : UK model

The components identified by mark \triangle or dotted line with mark \triangle are critical for safety. Replace only with part number specified.

Les composants identifiés par une marque \triangle sont critiques pour la sécurité. Ne les remplacer que par une pièce portant le numéro spécifié.

8-1-1 Cabinet Assembly



8-1-3 VCR Mechanical Parts (Bottom Side)

