

HCD-RG88

SERVICE MANUAL

E Model

Ver 1.1 2002.06



HCD-RG88 is the amplifier, CD player, tape deck and tuner section in MHC-RG88.

CD Section	Model Name Using Similar Mechanism	HCD-RG77
	CD Mechanism Type	CDM58E-30BD60C (Singapore)
		CDM58ES-30BD60C (Except Singapore)
	Base Unit Name	BU-30BD60C
TAPE Section	Optical Pick-up Name	A-MAX.3
	Model Name Using Similar Mechanism	HCD-RG77
	Tape Transport Mechanism Type	TCM-230AWR41CS

SPECIFICATIONS

Amplifier section

The following are measured at AC 120, 220, 240V
50/60 Hz

DIN power output (rated) 160 + 160 watts
(6 ohms at 1 kHz, DIN)

Continuous RMS power output (reference)
210 + 210 watts
(6 ohms at 1 kHz,
10% THD)

Inputs

GAME (VIDEO): 1 Vp-p, 75 ohms
(phono jack)

GAME (AUDIO): Voltage 250 mV,
impedance 47 kilohms
(phono jacks)

MD/VIDEO (AUDIO) IN: voltage 450 mV/250 mV,
impedance 47 kilohms
(phono jacks)

MIC: sensitivity 1 mV,
impedance 10 kilohms
(phone jack)

Outputs

VIDEO OUT: max. output level 1 Vp-p,
(phono jacks) unbalanced, Sync.
negative load impedance
75 ohms

PHONES: accepts headphones of
(stereo mini jack) 8 ohms or more

FRONT SPEAKER: accepts impedance of 6 to
16 ohms

SURROUND SPEAKER: accepts impedance of
24 ohms or more

SUBWOOFER accept impedance of
8 ohms or more

CD player section

System Compact disc and digital
audio system
Laser Semiconductor laser
($\lambda=795\text{nm}$)

Laser Output Max. 44.6 μW^*
*This output is the value
measured at a distance of
200 mm from the
objective lens surface on
the Optical Pick-up Block
with 7 mm aperture.

Frequency response 2 Hz – 20 kHz ($\pm 0.5\text{ dB}$)

Wave length 795 nm

CD OPTICAL DIGITAL OUT

(Square optical connector jack, rear panel)

Wave length 660 nm

Output Level –18 dBm

Tape player section

Recording system 4-track 2-channel stereo
Frequency response 50 – 13,000 Hz ($\pm 3\text{ dB}$),
using Sony TYPE I
cassette

– Continued on next page –

COMPACT DISC DECK RECEIVER

9-873-655-02

2002F0500-1

© 2002.06

Sony Corporation

Home Audio Company

Published by Sony Engineering Corporation

SONY®

SECTION 8 EXPLODED VIEWS

NOTE:

- -XX and -X mean standardized parts, so they may have some difference from the original one.

- Color Indication of Appearance Parts

Example:

KNOB, BALANCE (WHITE) . . . (RED)

↑ ↑
Parts Color Cabinet's Color

- Abbreviation

AR : Argentina model

MX : Mexican model

E51 : Chilean and Peruvian models

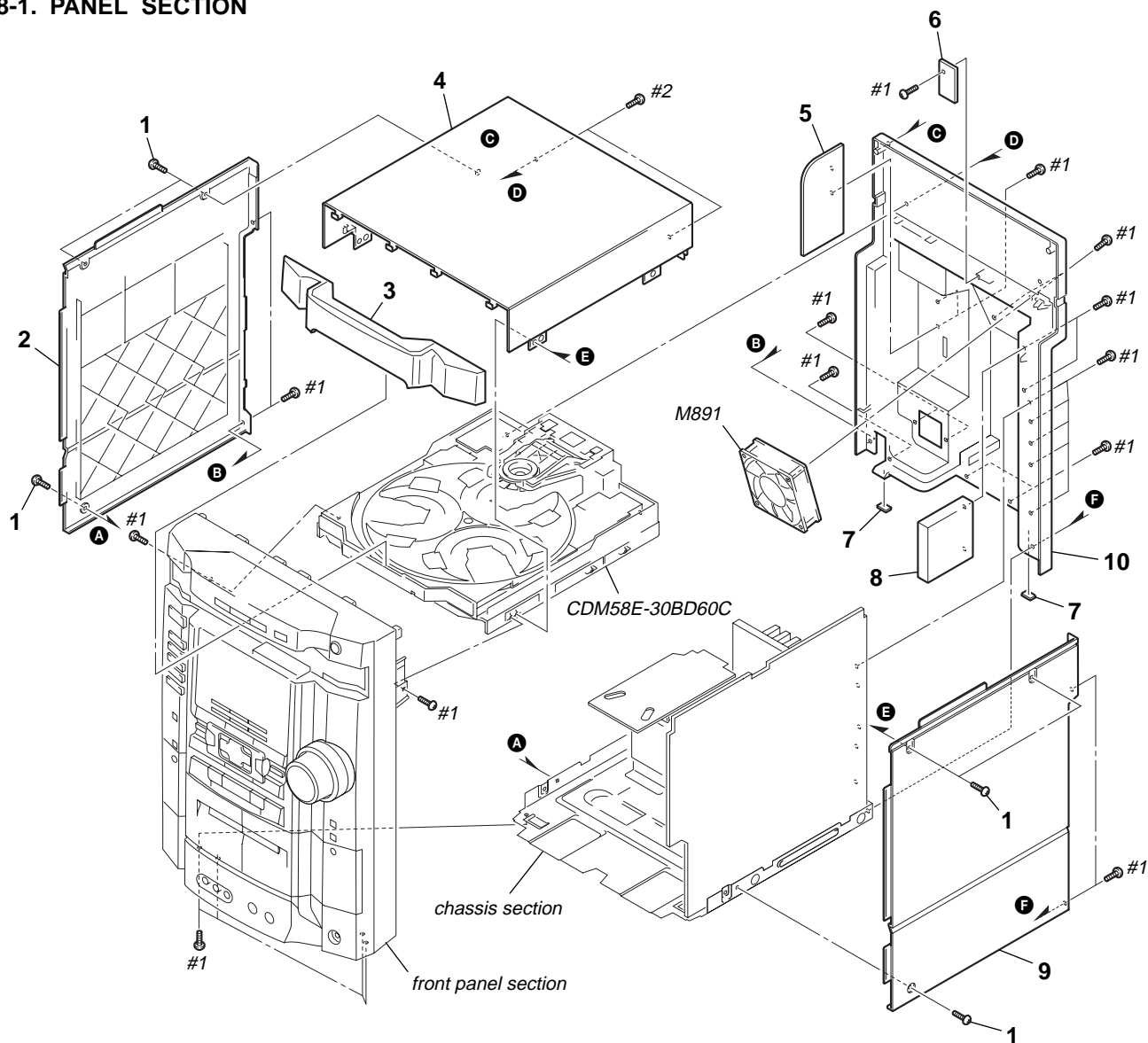
SP : Singapore model

- Items marked "*" are not stocked since they are seldom required for routine service. Some delay should be anticipated when ordering these items.

- Accessories are given in the last of the electrical parts list.

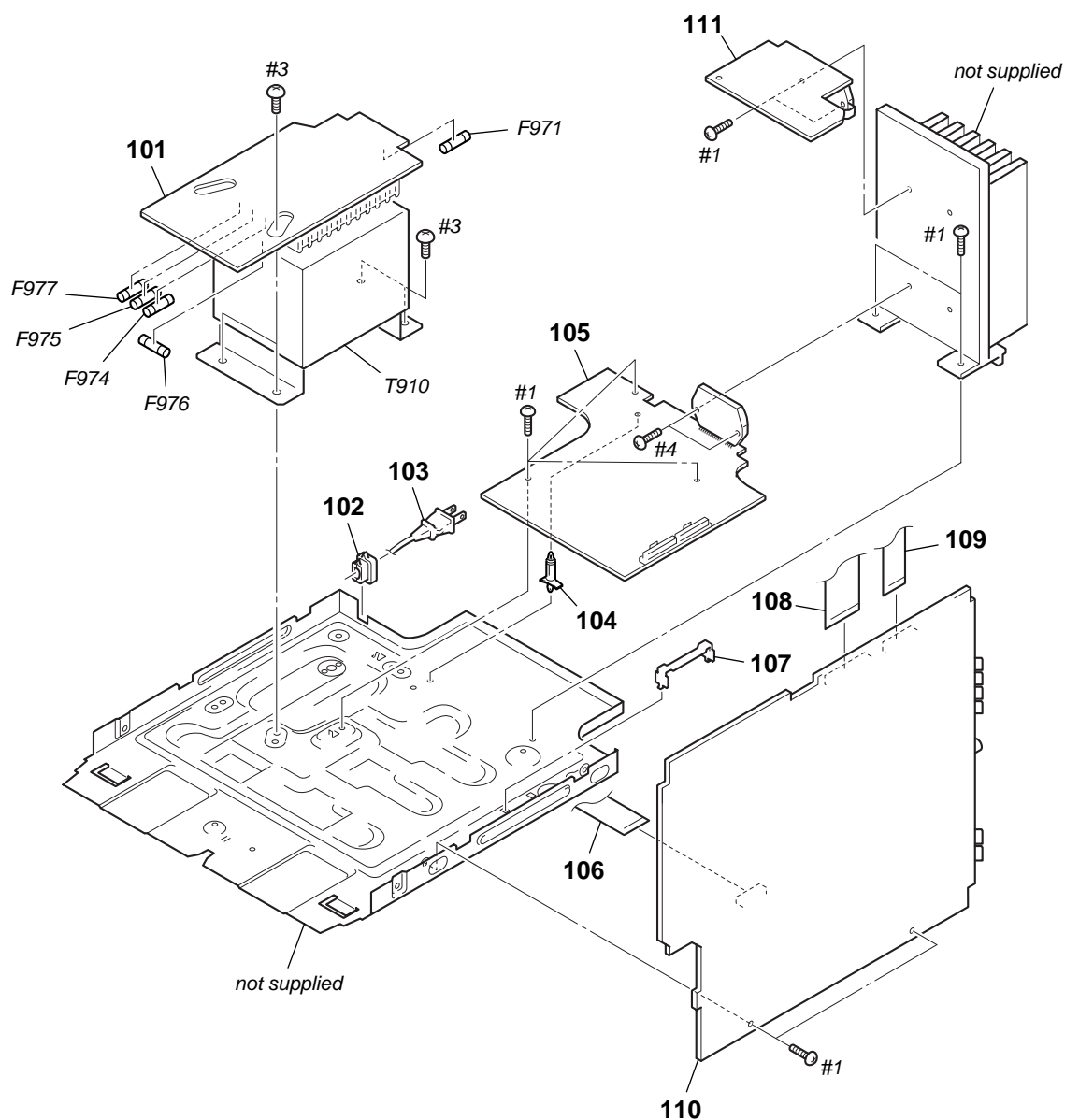
The components identified by mark Δ or dotted line with mark Δ are critical for safety. Replace only with part number specified.

8-1. PANEL SECTION

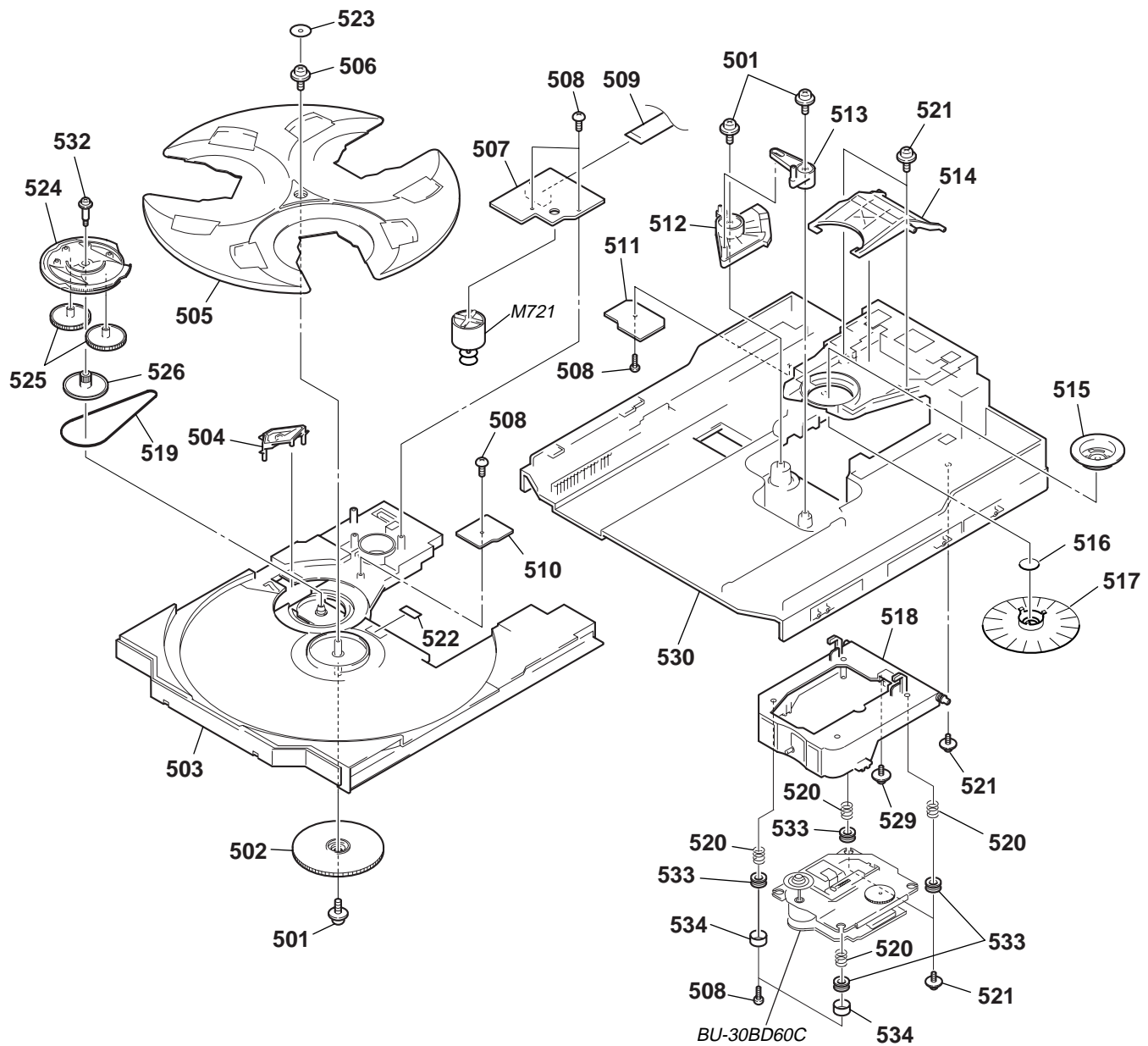


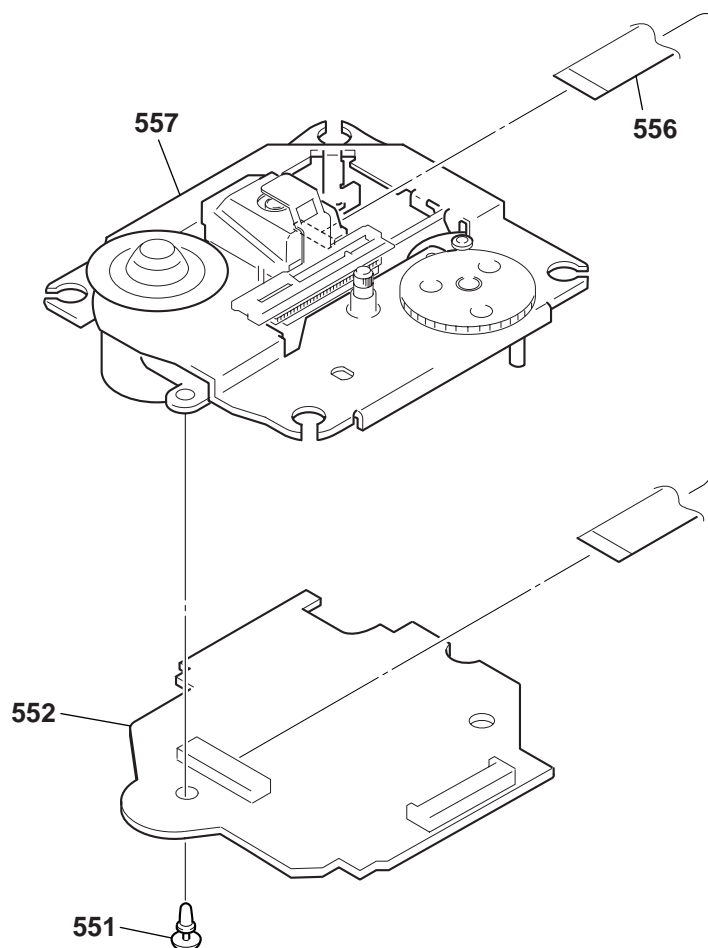
[illegible]

8-3. CHASSIS SECTION



The components identified by mark \triangle or dotted line with mark \triangle are critical for safety. Replace only with part number specified.



**8-5. BASE UNIT SECTION
(BU-30BD60C)**

The components identified by mark \triangle or dotted line with mark \triangle are critical for safety. Replace only with part number specified.

HCD-RG88

8-6. TAPE MECHANISM DECK SECTION (TCM-230AWR41CS)

