

HCD-RV900D

SERVICE MANUAL

Ver. 1.5 2005.06



*E Model
Australian Model*



- HCD-RV900D is the tuner, deck, DVD and amplifier section in MHC-RV900.

This system incorporates Dolby* Digital, Pro Logic Surround, DTS**, and the DTS Digital Surround System.

* Manufactured under license from Dolby Laboratories.

“Dolby”, “Pro Logic”, and the double-D symbol are trademarks of Dolby Laboratories.

** Manufactured under license from Digital Theater Systems, Inc. “DTS” and “DTS Digital Surround” are registered trademarks of Digital Theater Systems, Inc.

DVD Section	Model Name Using Similar Mechanism	NEW
	DVD Mechanism Type	CDM58D-DVBU17
	Base Unit Name	DVBU17
Tape deck Section	Model Name Using Similar Mechanism	NEW
	Tape Transport Mechanism Type	CWM43RR-01

SPECIFICATIONS

Amplifier section

The following measured at AC 120, 127, 220, 240 V, 50/60 Hz

Continuous RMS power output (reference)

Front speaker: 100 + 100 watts (6 ohms at 1 kHz, 10% THD)

Center speaker: 40 watts (8 ohms at 1 kHz, 10% THD)

Rear speaker: 40 + 40 watts (6 ohms at 1 kHz, 10% THD)

Inputs

MD/VIDEO (AUDIO) IN (phono jacks): voltage 450/250 mV, impedance 47 kilohms

GAME (AUDIO) IN (phono jack): voltage 250 mV, impedance 47 kilohms

MIC (phone jack) (except for North American and European models): sensitivity 1 mV, impedance 10 kilohms

Outputs

MD/VIDEO (AUDIO OUT) (phono jacks): voltage 250 mV, impedance 1 kilohm

VIDEO OUT (phono jack): max. output level 1 Vp-p, unbalanced, Sync negative, load impedance 75 ohms

S-VIDEO OUT (4-pin/mini-DIN jack): Y: 1 Vp-p, unbalanced, Sync negative, C: 0.286 Vp-p, load impedance 75 ohms

COMPONENT VIDEO OUT:

Y: 1 Vp-p, 75 ohms

Pb, Pr: 0.7 Vp-p, 75 ohms

PHONES (stereo mini jack):

accepts headphones of 8 ohms or more

Front speaker: accepts impedance of 6 to 16 ohms

Rear speaker: accepts impedance of 24 ohms

Center speaker: accepts impedance of 24 ohms

Disc player section

System Compact disc and digital audio and video system

Laser Semiconductor laser

(DVD: $\lambda=650$ nm,

CD: $\lambda=780$ nm)

Emission duration:

continuous

780 – 790 nm

Wavelength DVD (PCM 48 kHz):

Frequency response 2 Hz – 22 kHz (± 1 dB)

CD: 2 Hz – 20 kHz

(± 1 dB)

Video color system format

NTSC, PAL

CD OPTICAL DIGITAL OUT

(Square optical connector jack, rear panel)

Wavelength 660 nm

Output Level –18 dBm

Tape deck section

Recording system 4-track 2-channel stereo

Frequency response 40 – 13,000 Hz (± 3 dB), using Sony TYPE I cassette

Tuner section

FM stereo, FM/AM superheterodyne tuner

FM tuner section

Tuning range 87.5 – 108.0 MHz

Antenna FM lead antenna

Antenna terminals 75 ohm unbalanced

Intermediate frequency 10.7 MHz

— Continued on next page —

MINI HI-FI COMPONENT SYSTEM

9-874-119-06

2005F16-1

© 2005.06

Sony Corporation

Audio Group

Published by Sony Engineering Corporation

SONY®

SECTION 7
EXPLODED VIEWS

NOTE:

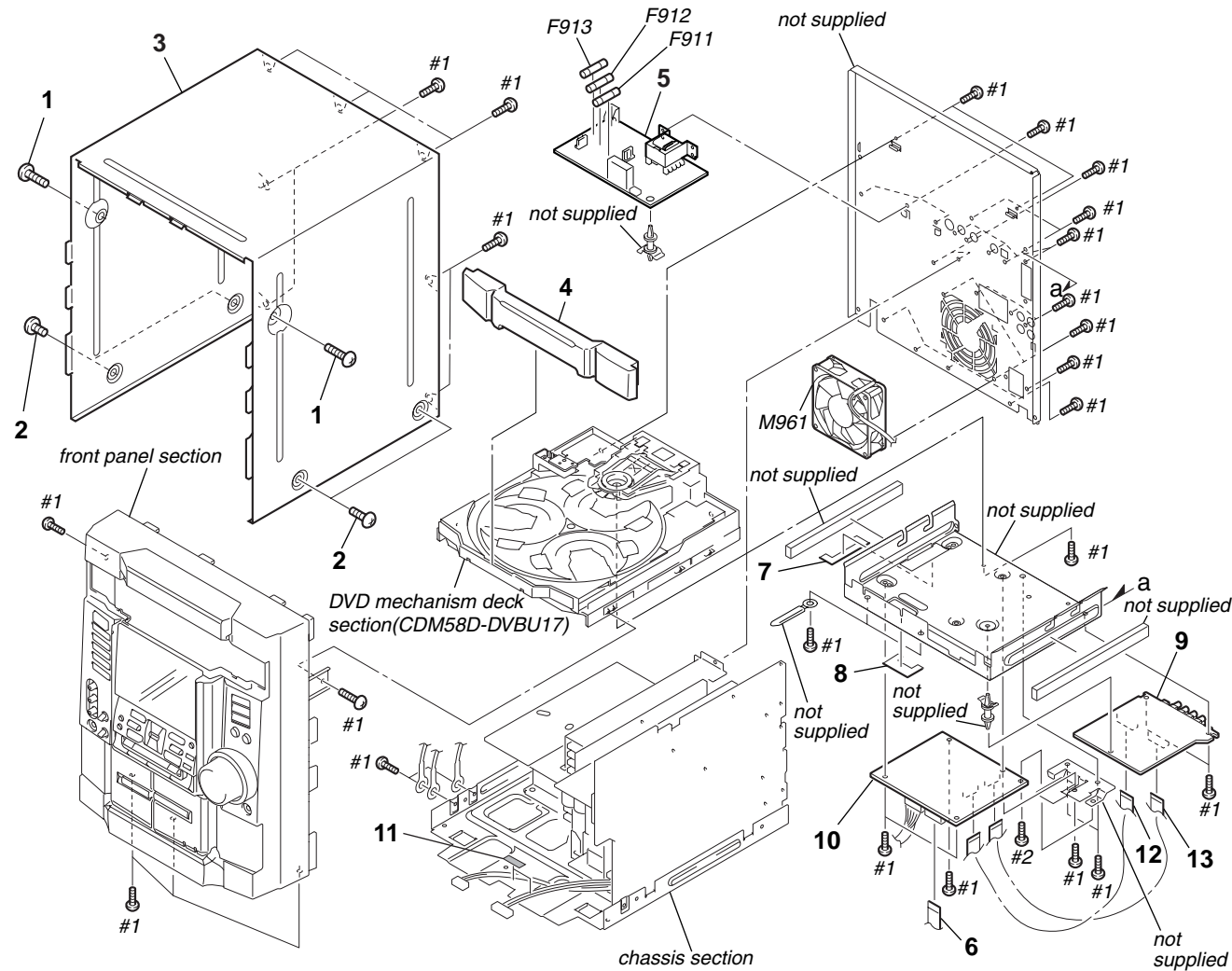
- -XX, -X mean standardized parts, so they may have some differences from the original one.
- Items marked “*” are not stocked since they are seldom required for routine service. Some delay should be anticipated when ordering these items.

- The mechanical parts with no reference number in the exploded views are not supplied.
- Abbreviation
EA : Saudi Arabia model
MY : Malaysia model
SP : Singapore model
TH : Thai model
MX : Mexican model

- AUS : Australian model
E51 : Chilean and Peruvian model
E3 : 240V AC Area in E model
KR : Korea model

The components identified by mark Δ or dotted line with mark Δ are critical for safety. Replace only with part number specified.

7-1. Main Section

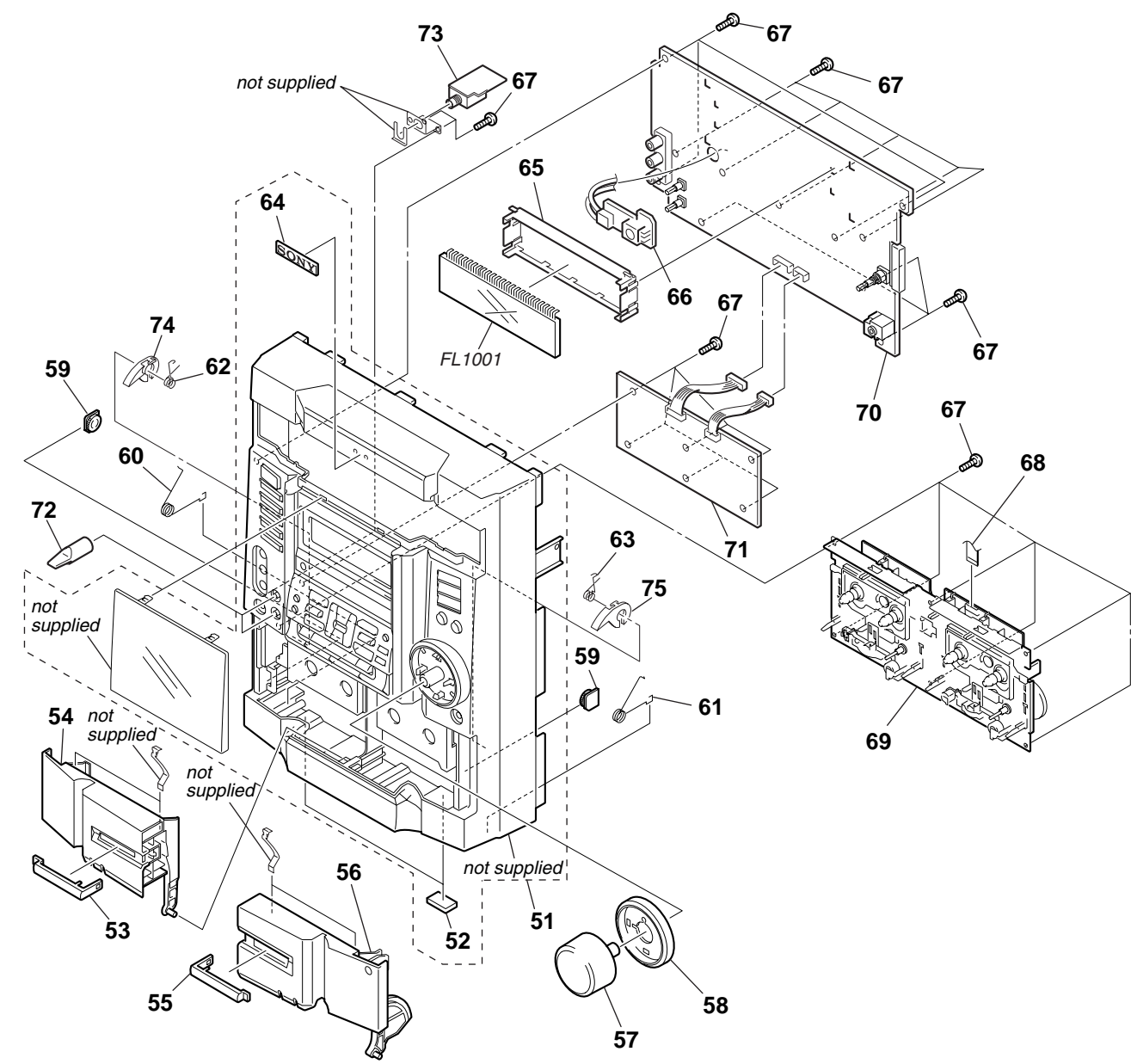


Ref. No.	Part No.	Description	Remarks	Ref. No.	Part No.	Description	Remarks
1				10			
2				11			
3				12			
4				13			
5				Δ F911			
				Δ F912			
5				Δ F913			
5				M961			
				#1			
6				#2			
7							
8							
9							
9							
10							

The components identified by mark Δ or dotted line with mark Δ are critical for safety. Replace only with part number specified.

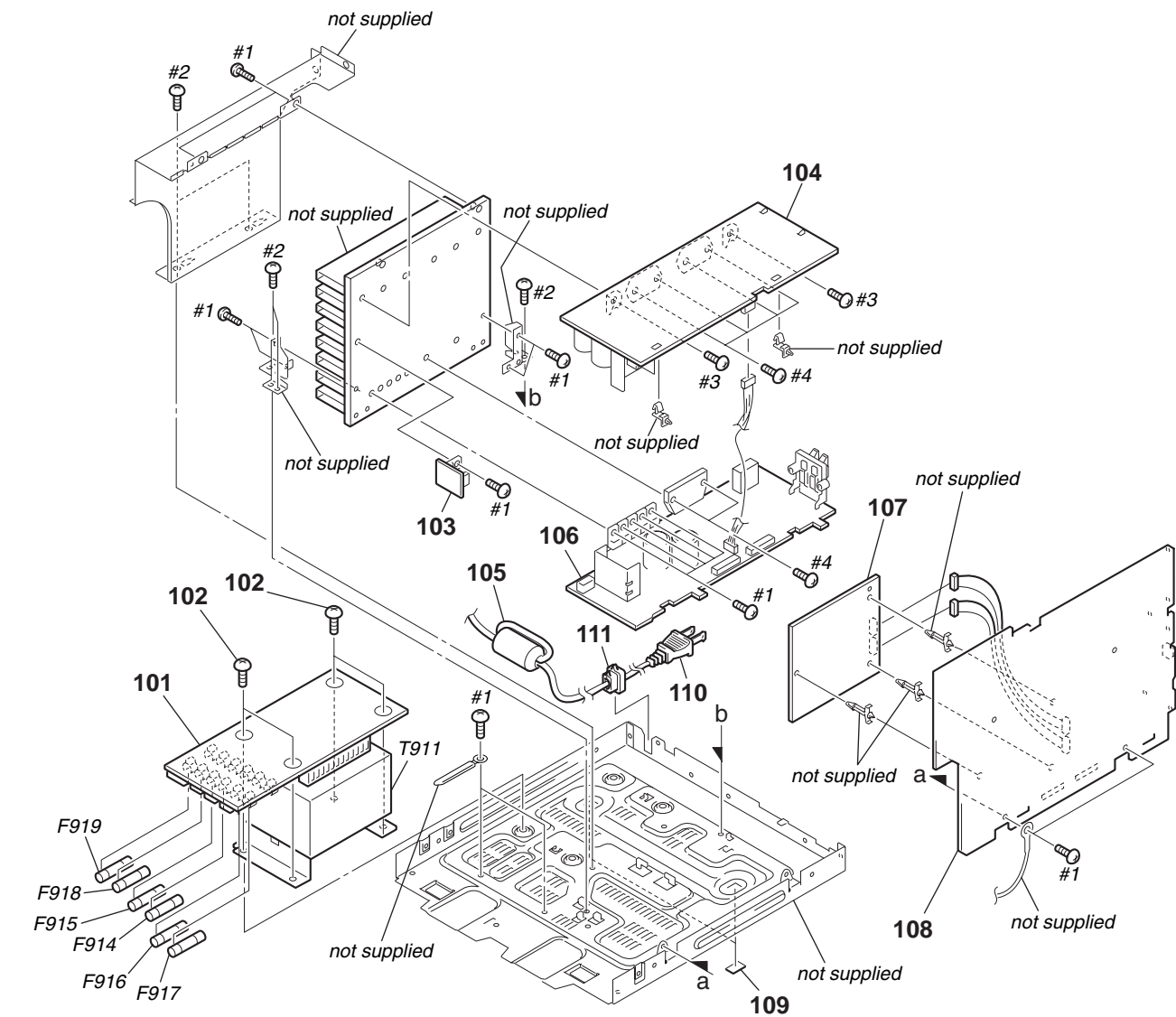
HCD-RV900D
Ver 1.3 2003.10

7-2. Front Panel Section



Ref. No.	Part No.	Description	Remarks	Ref. No.	Part No.	Description	Remarks
51				66			
51				67			
52				68			
53				69			
54				70			
55				70			
56				70			
57				71			
58				71			
59				72			
60				73			
61				73	A-		
62							
63							
64							
65							
66							

7-3. Chassis Section



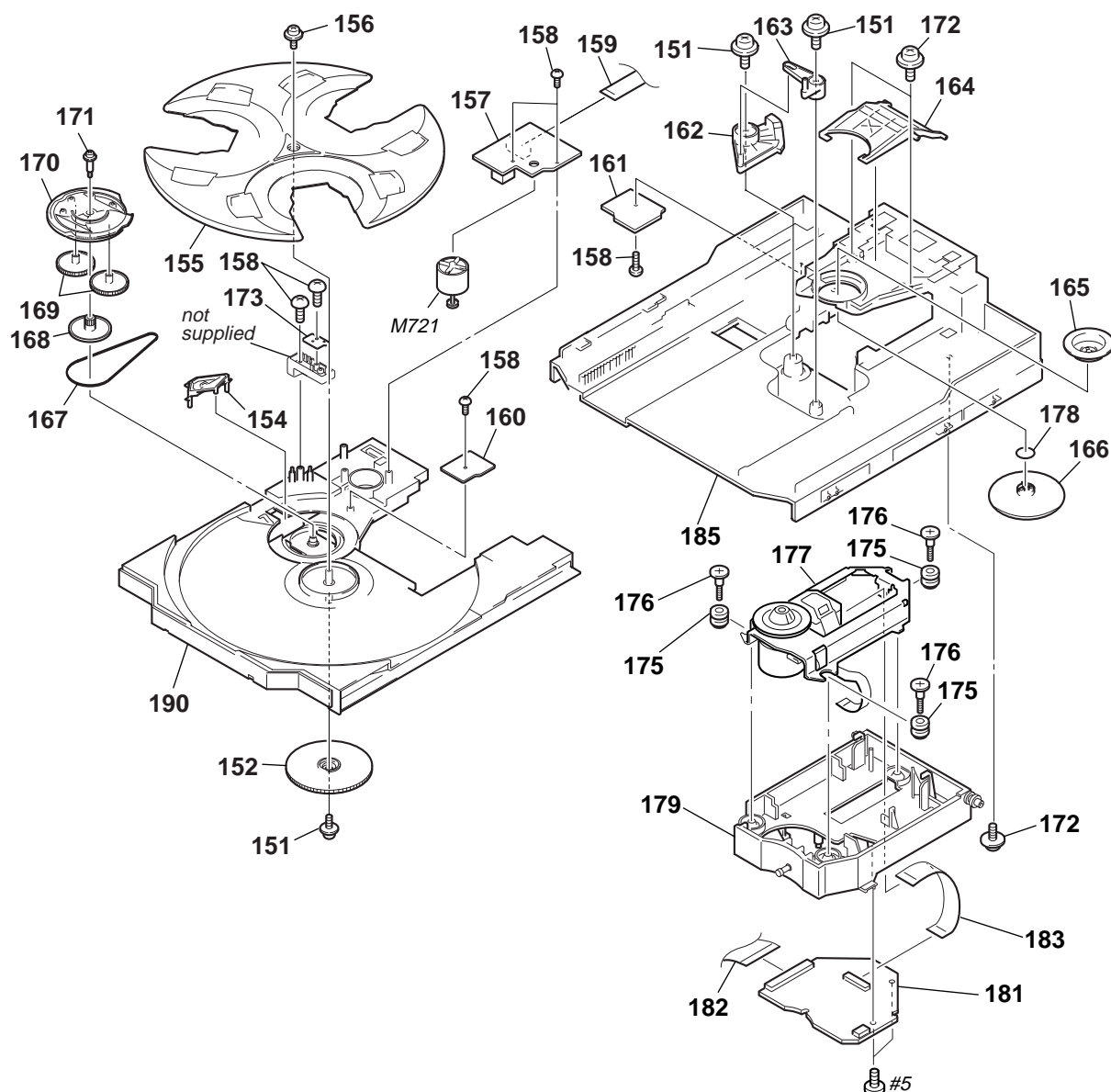
Ref. No.	Part No.	Description	Remarks	Ref. No.	Part No.	Description	Remarks
101				△ 110			
101				△ 110			
102				111			
103				111			
103				* 111			
				△ F914			
104				△ F915			
104				△ F916			
105				△ F917			
106				△ F918			
106							
107				△ F919			
107				△ T911			
107				△ T911			
108				#1			
108				#2			
108							
				#3			
108				#4			
108							
108							
109							
△ 110							
△ 110							

The components identified by mark △ or dotted line with mark △ are critical for safety. Replace only with part number specified.

HCD-RV900D

Ver. 1.5

7-4. DVD Mechanism Deck Section (CDM58D-DVBU17)



Ref. No.	Part No.	Description	Remarks	Ref. No.	Part No.	Description	Remarks
151				169			
152				170			
154				171			
155				172			
156				173			
157				175			
158				176			
159				△ 177			
160				178			
161				179			
162				181			
163				182			
164				183			
165				185			
166				190			
167				#5			
168				M721	A-4672-826-A	MOTOR ASSY (TURN)	

The components identified by mark △ or dotted line with mark △ are critical for safety.
Replace only with part number specified.