

# STR-KIV300

## SERVICE MANUAL

*E Model*

Ver. 1.2 2014.09



- STR-KIV300 is the amplifier, HDMI, USB, Bluetooth, NFC and FM tuner section in HT-IV300.

- This system incorporates with Dolby® Digital and Dolby Pro Logic adaptive matrix surround decoder and the DTS® Digital Surround System.
  - \* Manufactured under license from Dolby Laboratories. Dolby, Pro Logic, and the double-D symbol are trademarks of Dolby Laboratories.
  - \*\* For DTS patents, see <http://patents.dts.com>. Manufactured under license from DTS Licensing Limited. DTS, DTS-HD, the Symbol, & DTS and the Symbol together are registered trademarks of DTS, Inc. © DTS, Inc. All Rights Reserved.
- This system incorporates High-Definition Multimedia Interface (HDMI™) technology. The terms HDMI and HDMI High-Definition Multimedia Interface, and the HDMI Logo are trademarks or registered trademarks of HDMI Licensing LLC in the United States and other countries.
- “BRAVIA” is a trademark of Sony Corporation.
- “AVCHD/Progressive” and the “AVCHD/Progressive” logo are trademarks of Panasonic Corporation and Sony Corporation.
- “i”, “XMB”, and “xross media bar” are trademarks of Sony Corporation and Sony Computer Entertainment Inc.
- “PlayStation” is a registered trademark of Sony Computer Entertainment Inc.
- Wi-Fi®, Wi-Fi Protected Access® and Wi-Fi Alliance® are registered trademarks of Wi-Fi Alliance.
- Wi-Fi CERTIFIED™, WPA™, WPA2™, Wi-Fi Protected Setup™, Miracast™ and Wi-Fi CERTIFIED Miracast™ are trademarks of Wi-Fi Alliance.
- The N Mark is a trademark or registered trademark of NFC Forum, Inc. in the United States and in other countries.
- Android™ is a trademark of Google Inc.
- Google Play™ is a trademark of Google Inc.
- “Xperia” is a trademark of Sony Mobile Communications AB.
- The Bluetooth® word mark and logos are registered trademarks owned by Bluetooth SIG, Inc. and any use of such marks by Sony Corporation is under license. Other trademarks and trade names are those of their respective owners.
- MPEG Layer-3 audio coding technology and patents licensed from Fraunhofer IIS and Thomson.
- Windows Media is either a registered trademark or trademark of Microsoft Corporation in the United States and/or other countries. This product is protected by certain intellectual property rights of Microsoft Corporation. Use or distribution of such technology outside of this product is prohibited without a license from Microsoft or an authorized Microsoft subsidiary. Content owners use Microsoft® PlayReady™ content access technology to protect their intellectual property, including copyrighted content. This device uses PlayReady technology to access PlayReady protected content and/or WMDRM protected content. If the device fails to properly enforce restrictions on content usage, content owners may require Microsoft to revoke the device's ability to consume PlayReady protected content. Revocation should not affect unprotected content or content protected by other content access technologies. Content owners may require you to upgrade PlayReady to access their content. If you decline an upgrade, you will not be able to access content that requires the upgrade.
- All other trademarks are trademarks of their respective owners.
- Other system and product names are generally trademarks or registered trademarks of the manufacturers. ™ and ® marks are not indicated in this document.

### SPECIFICATIONS

#### Amplifier Section

POWER OUTPUT (rated)  
 Front L/Front R: 75 W + 75 W (at 3 ohms, 1 kHz, 1% THD)  
 POWER OUTPUT (reference)  
 Front L/Front R/Surround L/Surround R:  
 Center: 125 W (per channel at 3 ohms, 1 kHz)  
 Subwoofer: 250 W (at 6 ohms, 1 kHz)  
 250 W (at 6 ohms, 80 Hz)  
 Inputs (Analog)  
 AUDIO IN  
 Inputs (Digital)  
 TV (Audio Return Channel/OPTICAL)  
 Sensitivity: 1.6 V/500 mV  
 Supported formats: LPCM 2CH (up to 48 kHz),  
 Dolby Digital, DTS

#### HDMI Section

Connector Type A (19 pin)

#### USB Section

USB (USB) port: Type A (For connecting USB memory, memory card reader, digital still camera, and digital video camera)

#### Wireless LAN Section

Standards Compliance IEEE 802.11 a/b/g/n  
 Frequency band 2.4 GHz, 5 GHz

#### Bluetooth Section

Communication system Bluetooth Specification version 3.0  
 Output Bluetooth Specification Power Class 2  
 Maximum communication range Line of sight approx. 10m<sup>1)</sup>  
 Frequency band 2.4 GHz  
 Modulation method FHSS (Freq Hopping Spread Spectrum)  
 Compatible Bluetooth profiles<sup>2)</sup>  
 A2DP 1.2 (Advanced Audio Distribution Profile)  
 AVRCP 1.3 (Audio Video Remote Control Profile)  
 SBC<sup>3)</sup>, AAC  
 Supported Codecs<sup>3)</sup>  
 Transmission range (A2DP)  
 20 Hz – 20,000 Hz (Sampling frequency 44.1 kHz, 48 kHz)

<sup>1)</sup>The actual range will vary depending on factors such as obstacles between devices, magnetic fields around a microwave oven, static electricity, cordless phone, reception sensitivity, antenna's performance, operating system, software application, etc.

<sup>2)</sup>Bluetooth standard profiles indicate the purpose of Bluetooth communication between devices.

<sup>3)</sup>Codec: Audio signal compression and conversion format

<sup>4)</sup>Subband Codec

#### FM Tuner Section

System PLL quartz-locked digital synthesizer  
 Tuning range 87.5 MHz - 108.0 MHz (50 kHz step)  
 Antenna (aerial) FM wire antenna (aerial)

#### General

Power requirements 220 V – 240 V AC, 50/60 Hz  
 Power consumption On: 100 W  
 Standby: 0.3 W  
 Dimensions (w/h/d) (approx.) 249 mm × 62.5 mm × 229.5 mm incl. projecting parts  
 Mass (approx.) 1.6 kg

Design and specifications are subject to change without notice.

AV RECEIVER

9-890-654-03

2014I81-1

© 2014.09

Sony Corporation

Published by Sony EMCS (Malaysia) PG Tec

SONY®

## SECTION 7 EXPLODED VIEWS

### Note:

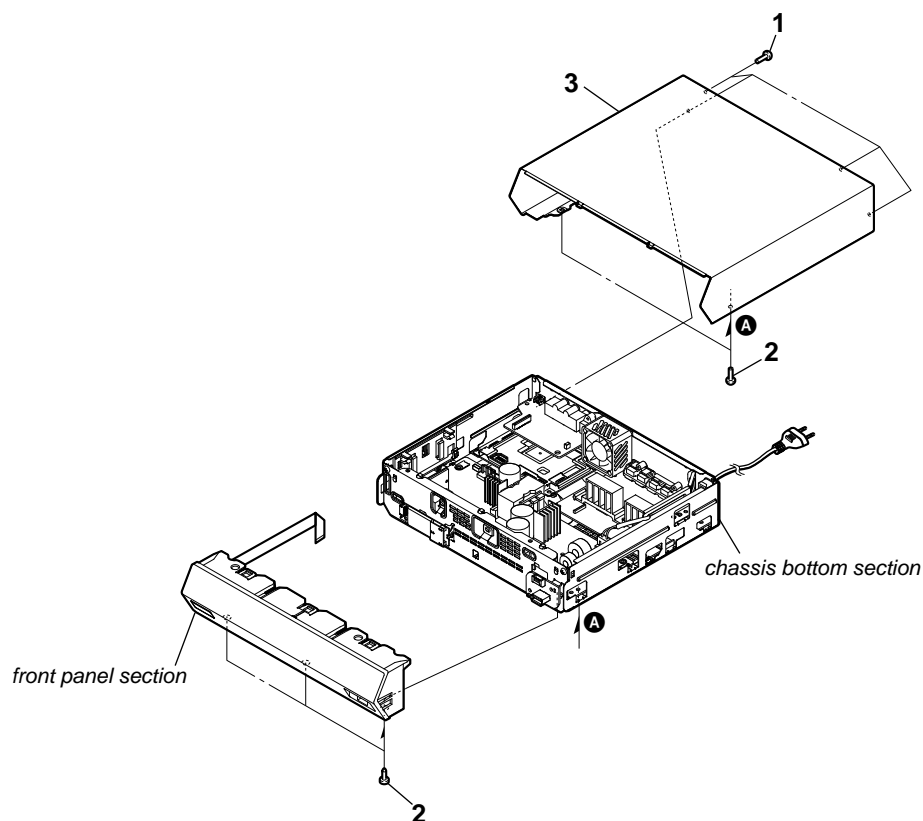
- -XX and -X mean standardized parts, so they may have some difference from the original one.
- Items marked "\*" are not stocked since they are seldom required for routine service. Some delay should be anticipated when ordering these items.
- The mechanical parts with no reference number in the exploded views are not supplied.
- Color Indication of Appearance Parts Example:  
KNOB, BALANCE (WHITE) . . . (RED)

↑                      ↑  
 Parts Color    Cabinet's Color

The components identified by mark  $\triangle$  or dotted line with mark  $\triangle$  are critical for safety.  
Replace only with part number specified.

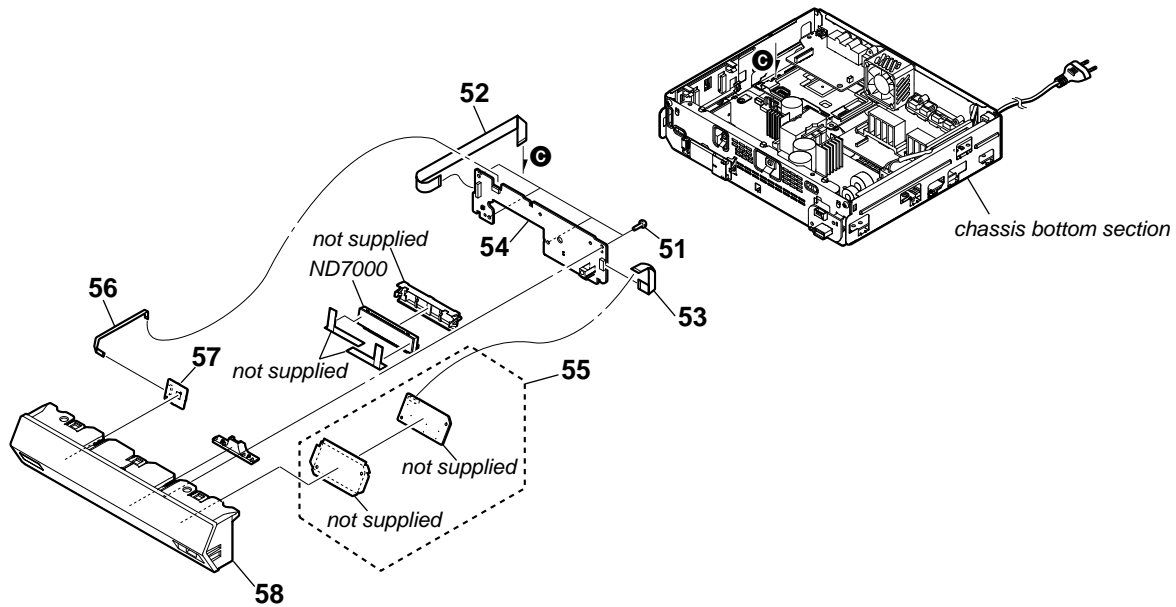
The components identified by mark  $\triangle$  contain confidential information.  
Strictly follow the instructions whenever the components are repaired and/or replaced.

### 7-1. CASE SECTION

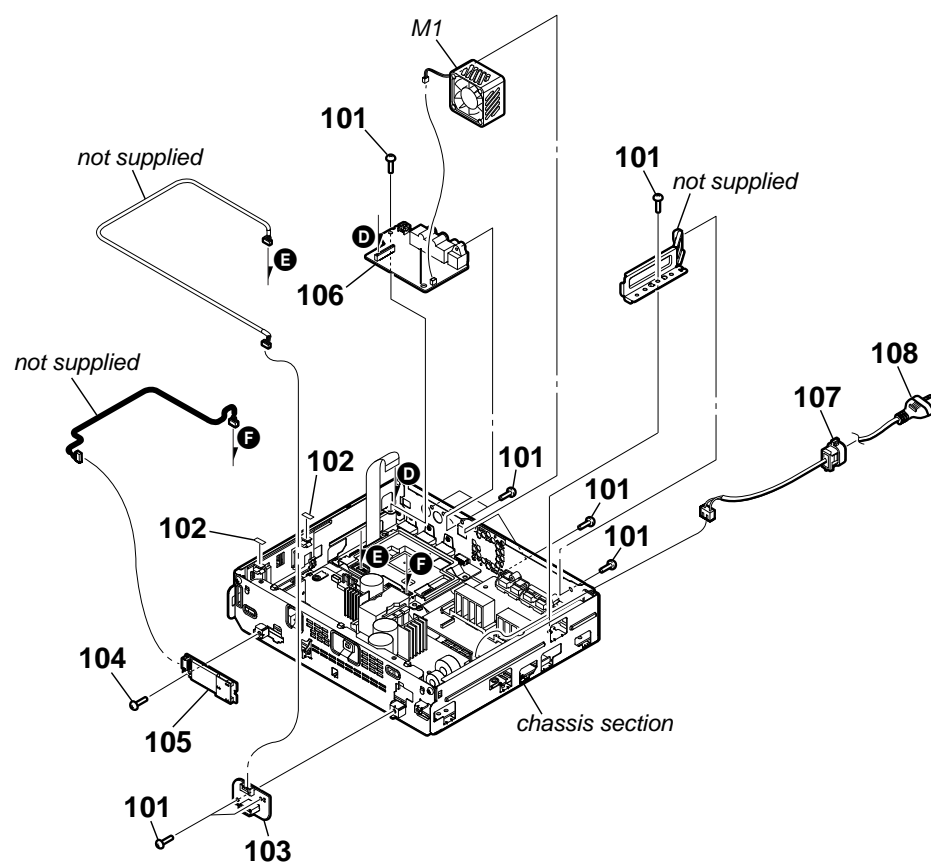


# STR-KIV300

## 7-2. FRONT PANEL SECTION



### 7-3. CHASSIS BOTTOM SECTION



# STR-KIV300

Ver. 1.1

## 7-4. CHASSIS SECTION

