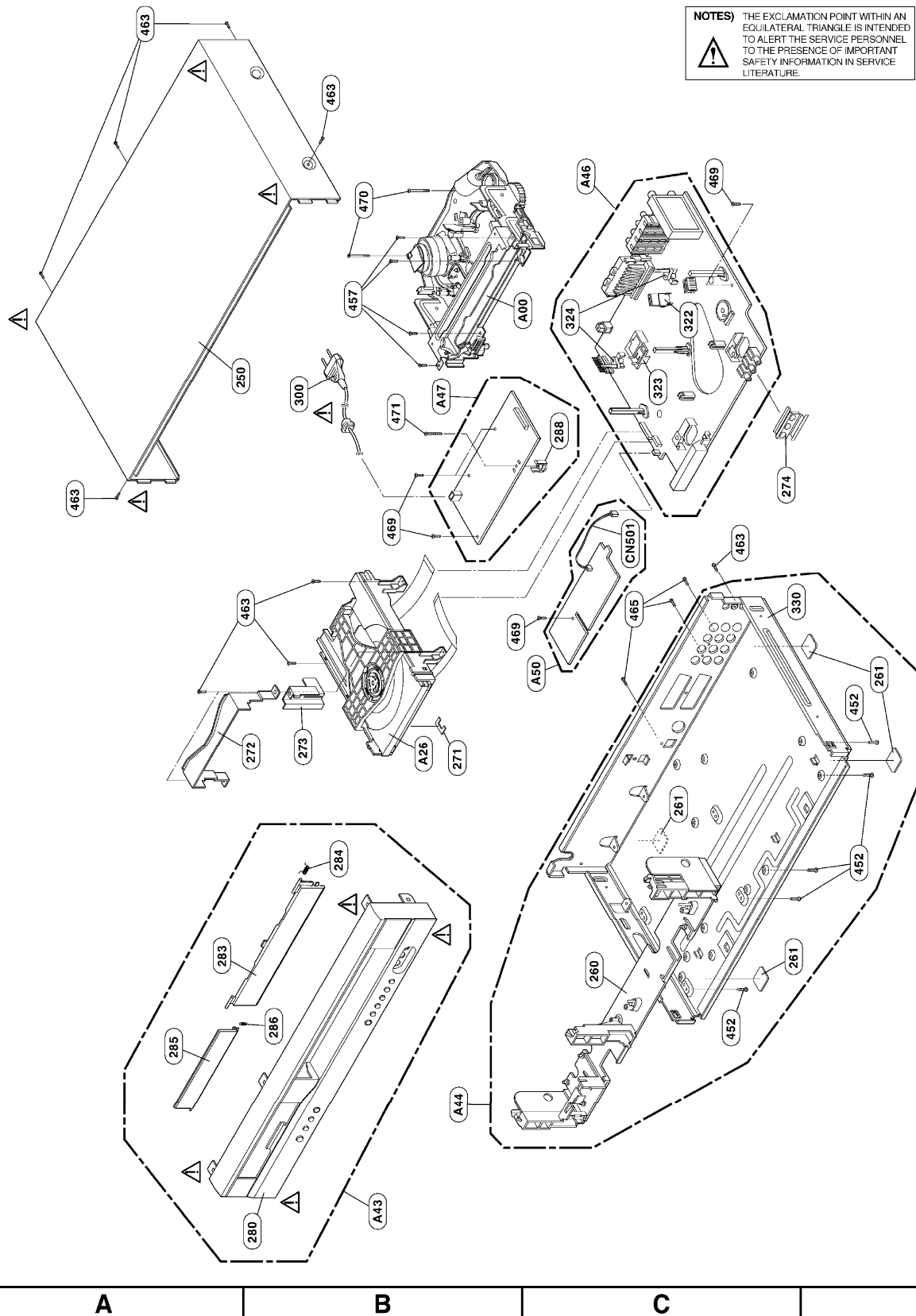


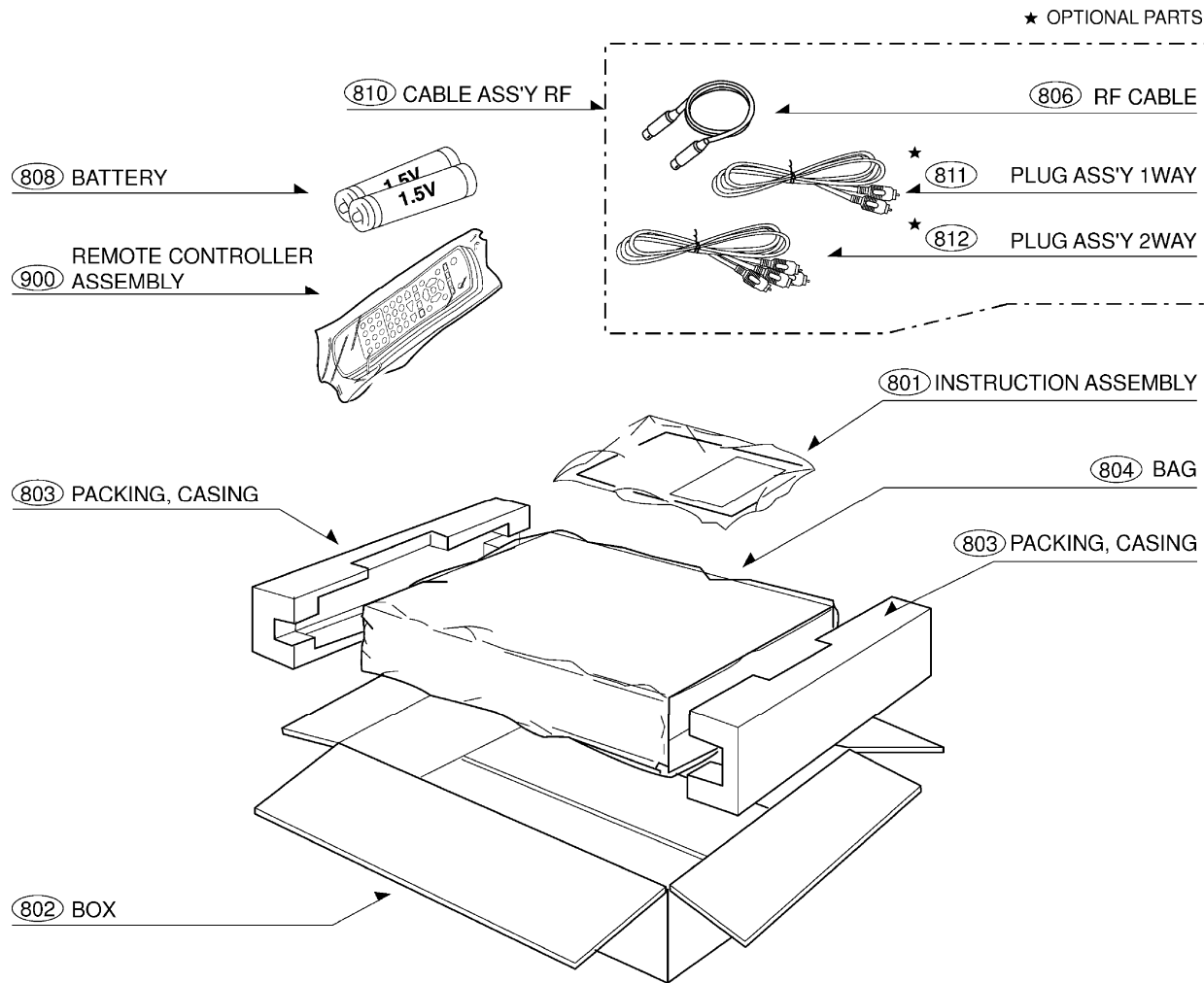
EXPLODED VIEWS

1. CABINET AND MAIN FRAME SECTION

NOTES) THE EXCLAMATION POINT WITHIN AN EQUILATERAL TRIANGLE IS INTENDED TO ALERT THE SERVICE PERSONNEL TO THE PRESENCE OF IMPORTANT SAFETY INFORMATION IN SERVICE LITERATURE.

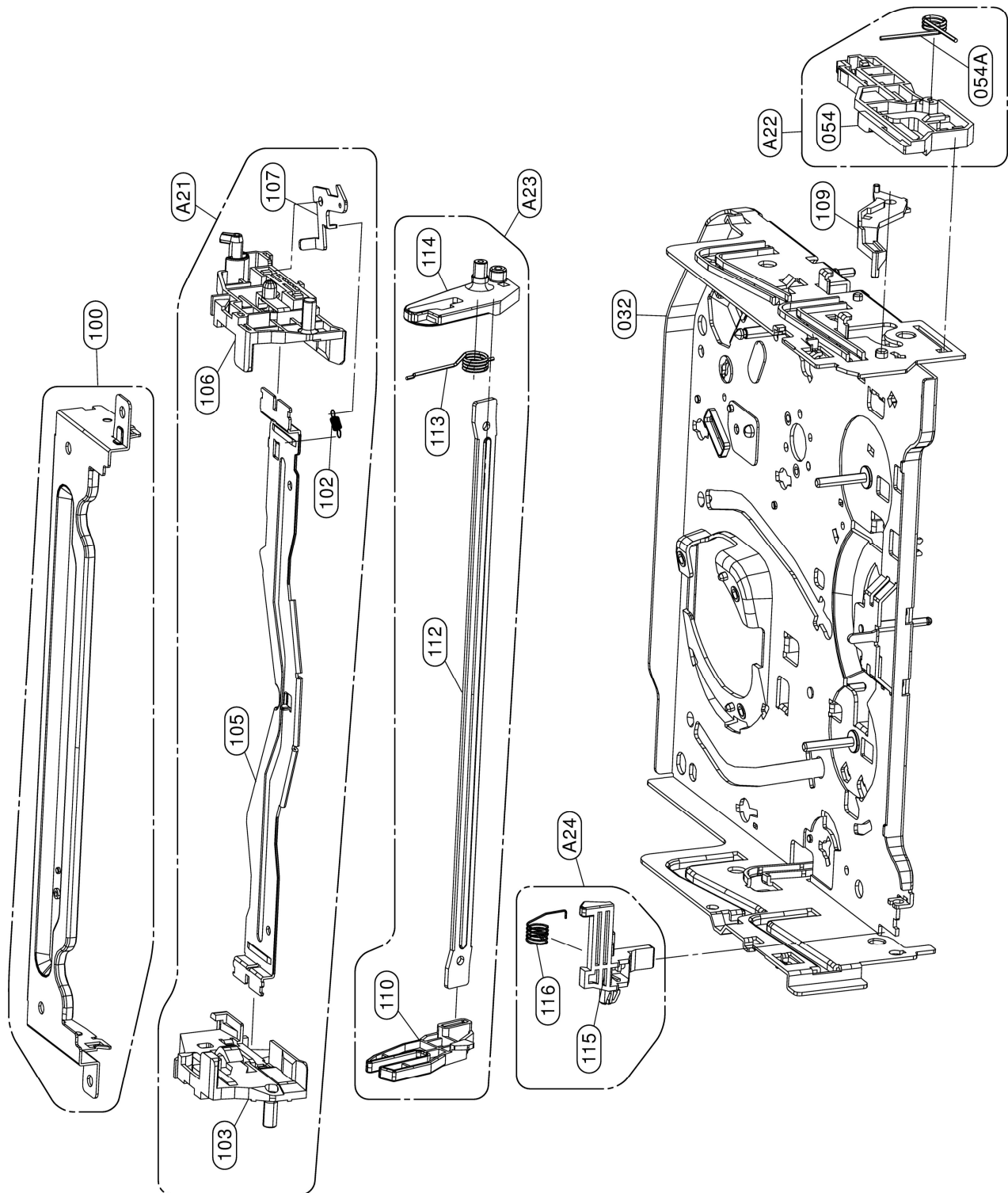


2. PACKING ACCESSORY SECTION



EXPLODED VIEWS

1. Front Loading Mechanism Section



3. Moving Mechanism Section (2)



EXPLODED VIEWS

1. DECK MECHANISM EXPLODED VIEW(DP-10C)

